



# SWIM SPA MANUAL









|   |                                                      |    |
|---|------------------------------------------------------|----|
| 1 | <b>Introduction</b>                                  | 4  |
| 2 | <b>Welcome / Swim Spa Record &amp; Warranty</b>      | 5  |
| 3 | <b>Important Safety &amp; Operating Instructions</b> | 6  |
|   | Placing the swim spa                                 | 9  |
| 4 | <b>Installation Instructions</b>                     | 10 |
|   | Swim spa contents                                    | 10 |
|   | Assembling the accessories                           | 10 |
|   | Pre-fill procedure                                   | 11 |
|   | Filling the swim spa                                 | 12 |
| 5 | <b>Startup &amp; Refill Procedure</b>                | 14 |
|   | Installing the filter cartridges                     | 14 |
|   | Switching on & heating up                            | 16 |
|   | Balancing & sanitising the water                     | 17 |
| 6 | <b>Swim Spa Usage Guide &amp; Tips</b>               | 18 |
|   | Topside control panel quick guides                   | 18 |
|   | Swim spa operation & settings                        | 22 |
| 7 | <b>Getting to Know Your Swim Spa</b>                 | 28 |
|   | Swim spa overview by model                           | 28 |
|   | Swim spa parts labeled                               | 56 |
|   | Pressure diverter & air venturi valves               | 59 |
|   | Water fountain control                               | 59 |
|   | LED lights                                           | 60 |
|   | Jets                                                 | 60 |
| 8 | <b>Swim Spa Care &amp; Maintenance</b>               | 62 |
|   | Opening the panels                                   | 62 |
|   | Draining the swim spa                                | 63 |
|   | Cleaning the filters                                 | 64 |
|   | Cleaning the acrylic shell                           | 64 |
|   | Cleaning & maintaining the cabinet                   | 65 |
|   | Caring for the swim spa cover                        | 65 |
|   | Cleaning the jets                                    | 66 |
|   | Performing a pipe clean                              | 66 |
|   | Leaving the swim spa short term                      | 67 |
|   | Leaving the swim spa long term                       | 68 |
|   | Cleaning schedule / checklist                        | 69 |
| 9 | <b>Service Information</b>                           | 70 |
|   | Pump maintenance                                     | 70 |
|   | Barrel union maintenance                             | 70 |
|   | UV bulb replacement                                  | 71 |
|   | Technical support contact                            | 71 |
|   | Troubleshooting                                      | 72 |





# *Congratulations!*

You are the proud new owner of an Alpine Swim Spa! It is our pleasure to welcome you to the Alpine Spa family. The perfect swim training environment and hydrotherapy massage is now ready and waiting for you every day, all within the confines of your own backyard!

We take exceptional pride in our product and have worked hard to ensure all our swim spas include not only the latest in swim spa technology, but also the absolute best in design, quality and construction. So you can rest assured our products will last you for many relaxing years to come.

Cheers,

**The Alpine Spas Team**





### Welcome

Please take the time to read this entire manual before operating the swim spa. This manual contains important information for the owner and we suggest keeping it in a safe place for future reference. Every effort has been made to ensure the accuracy of this manual, however Alpine Spas reserves the right to change or improve their products and their specifications without notification. If you have any questions about this manual or the swim spa, please contact Alpine Spas for assistance. Please refer to our website for terms & conditions.



Download the latest copy of this manual and other helpful documentation from our support page:  
<http://alpinespas.co.nz/support/>  
Scan QR code for direct link.



### Your Personal Record & Warranty

## Swim Spa Details

Please fill in this information below and keep on hand for future reference. Alpine Spas may request this information upon the submission of a service or technical request.

Swim spa model.....

Serial number (found on silver cabinet plaque).....

Date of purchase.....

Date of installation.....



#### IMPORTANT WARRANTY INFORMATION:

Swim spa warranty is effective from date of delivery & is not transferable. Please contact Alpine Spas for all information regarding warranty. Warranty may be void due to improper operation, care or negligence. Certain routine water care and general care requirements along with operation guides are found throughout this manual, please read and follow all instructions. Perform routine maintenance as per pages 64-71.



## READ AND FOLLOW ALL INSTRUCTIONS!

WHEN INSTALLING AND USING THIS SWIM SPA AND ITS ELECTRICAL COMPONENTS, BE SURE TO FOLLOW BASIC SAFETY PRECAUTIONS INCLUDING THE FOLLOWING:

**1. WARNING:**

To reduce the risk of injury, do not permit children to use this product unless they are closely supervised at all times.

**2. DANGER:**

Risk of accidental drowning. Extreme caution must be exercised to prevent unauthorized access by children.

**3. DANGER:**

Risk of injury. Never operate the swim spa if suction fittings are broken or missing.

**4. DANGER:**

Risk of electrical shock. Do not permit any electrical appliance such as a light, radio, television, etc. within 1.5m of a swim spa unless such appliances are installed and built-in by the manufacturer.

**5. ELECTRICAL SUPPLY:**

The electrical supply for this product must include a suitably rated switch & RCD to open all ungrounded supply conductors to comply with the national electrical standards. This disconnect must be readily accessible and visible to the swim spa occupant but installed at least 1.5m from the swim spa's water.

**6. WARNING:**

To reduce the risk of injury:

a) Spa water temperature between 38°C and 42°C is considered safe for a healthy adult. Lower water temperatures are recommended for young children and when the spa use exceeds 10 minutes. Ideal Swim Spa temperature ranges between 20°C - 30°C.

b) Since excessive water temperatures have a high potential for causing fetal damage during early months of pregnancy, pregnant women should limit swim spa use and water temperatures to no more than 38°C.

c) Do not use alcohol, drugs, or medication before or during swim spa or spa pool usage.

d) Persons with a history of heart disease, low or high blood pressure, circulatory system problems, or diabetes should consult a physician before using a swim spa.

e) Persons using medication should consult a physician before using the swim spa as some medication may induce drowsiness, while other medication may affect heart rate, blood pressure, and circulation.

**7. WARNING:**

To prevent electrocution, do not modify or connect any additional auxiliary components (for example cable, speakers, headphones, additional audio/video components, etc) to the system.



**8. CAUTION:**

Risk of electrical shock. Do not service the swim spa controller yourself as opening or modifying the controller may expose you to dangerous voltage or other risk of injury. Refer all servicing to qualified service personnel unless advised otherwise by the retailer.

**9. CAUTION:**

Risk of electrical shock. If the power supply connections or power supply cord(s) are damaged, if water is entering the audio / video compartment or any electrical equipment compartment area, if the protective shields or barriers are showing signs of deterioration, or if there are signs of other potential damage to the unit: turn off the unit and refer the servicing to Alpine Spas.

10. The swim spa should be subject to periodic routine maintenance and care according to the 'Swim Spa Care & Maintenance' and 'Service Information' sections of this manual.

11. Installation of the swim spa for anything other than a residential dwelling may result in voiding the manufacturer's warranty. Please contact the dealer to confirm.

12. Do not bring any object into the swim spa that could damage the swim spa shell.

13. Never insert any object into any opening.

**14. WARNING:**

Do not sit on the swim spa cover or place objects on it.

15. Remove any water or debris that may collect on the swim spa cover.

**16. WARNING:**

Do not use the swim spa immediately after strenuous exercise.

17. If you feel pain or dizziness at any time while using the swim spa, discontinue use and contact a physician.

**18. WARNING:**

Observe reasonable time limits when using the swim spa. Long exposures at high temperatures can cause high body temperatures. Symptoms may include dizziness, nausea, fainting, drowsiness, and reduced awareness. These effects could possibly result in drowning or hypothermia.

**19. WARNING:**

The swim spa's jets produce a stream of water with relatively high pressure. Prolonged exposure to localised areas of the body may cause bruises to the skin.

**20. WARNING:**

To avoid risk of drowning, the swim spa cover should be in place and properly latched when swim spa is not in use.

**21. IMPORTANT:**

Read and understand the warnings on the swim spa cover.



**FAILING TO READ AND UNDERSTAND THE BELOW INSTRUCTIONS MAY VOID YOUR SWIM SPA WARRANTY.**

**DO NOT** leave the swim spa empty and exposed to direct sunlight without it's cover - doing so may damage the acrylic.

**DO NOT** power the spa or swim spa without first filling with water.

**DO NOT** allow the water level to fall below the filter/skimmer box. The water level should be kept in line with the perimeter LEDs or at least 50mm above the bottom of the skimmer box at all times.

**DO NOT** allow any persons to place their head under the water of the spa compartment if your swim spa has one attached.

**DO NOT** roll or slide the swim spa on its side.

**DO NOT** use any chemicals or water balancing products in the swim spa, other than those sold by Alpine Spas Ltd or Spa Supplies Ltd.

---

**DO** ensure a water maintenance regime is used and followed regularly. Failing to balance water or sanitise correctly can damage swim spa components and void warranty. A guide is provided which should be followed carefully.

**DO** ensure the swim spa cover is placed on the pool and locked when not in use.

**DO** perform a regular swim spa cleaning schedule as instructed by this manual.

**DO** drain and refill your swim spa at least every 6-12 months or more frequently if required.

**DO** ensure at least 4 hours of filtration is performed by the swim spa each day (this is set up by default)

**DO** ensure the swim spa cover is opened every few days for a few minutes (if unused) to avoid build up of gas under the cover.





## Placing/Installing the Swim Spa

### Choosing the Best Position

When choosing where to position your swim spa, the first thing you should consider is what is going beneath it. Your swim spa is very heavy, weighing anything between 6000kg and 12000kg when filled. It is therefore very important you choose an adequate foundation that is strong and level to ensure there is no shifting or strain on the swim spa shell or framing.

The base we strongly recommend is reinforced concrete pad at least 150mm thick. Any alternative foundation must evenly support and hold the swim spa framing uniformly flat/level and its max load rating adequately withstand the swim spa's weight, including the max bather load.

### Check Drainage

You need to be sure the area in which the swim spa is placed has enough drainage capacity to handle the entire water content of the swim spa. In the event of spillage, areas around the swim spa may become wet; therefore, all flooring, furniture, walls and adjacent structures should be moisture-resistant.

### Check Service Access

It is important to consider the access to the cabinet surrounding the swim spa. In the unlikely event of a leak or issue with components, a service agent may require access to a particular cabinet. We require 600mm perimeter of space around the entire swim spa, otherwise the swim spa may need to be moved by the customer into a position suitable for a technician at the time of service.

Access to all cabinets is the responsibility of the owner.

### Detailed Installation Guide

For more detailed information and tips on positioning and installing, we highly recommend you read through our 'Swim Spa Pre-Delivery Guide'. The guide was emailed to you upon/after purchase. A copy can be downloaded from the link at the bottom of this page.



**FAILURE TO FOLLOW THE INSTRUCTIONS IN THE PRE-DELIVERY GUIDE MAY RESULT IN VOIDING YOUR SWIM SPA WARRANTY.**



Download the 'Swim Spa Pre-Delivery Guide' from our support page: <http://alpinespas.co.nz/support/>  
Scan QR code for direct link.





### SWIM SPA CONTENTS

#### Separate Items:



Swim Spa



Swim Spa  
Safety Cover



Water Care Kit  
(Select Models)



Cover Lifter  
(Select Models)

#### Items Packaged *Inside the Swim spa:*



Filters



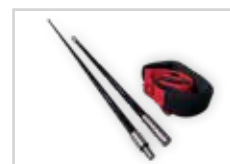
Drain Valve to  
Garden Hose  
Attachment



Cover Keys &  
Screws



Manuals &  
Warranty Card



Swim Pole &  
Harness  
(Select Models)



Cable Exit  
Grommet

### ASSEMBLING THE ACCESSORIES

#### Swim Spa Cover

The cover requires minimal installation other than unpacking and placing on top of the swim spa. There are safety locks hanging off the sides of the cover which need to be screwed into the swim spa cabinet. Screws and cover keys should be in found in the waterproof iPack bag or attached to the cover itself.

#### Swim Pole (Select Models)

If included with your model, the swim pole will be found packaged inside the swim spa. To assemble, screw the carbon-fibre rods together, and tie the bungy cord through the hole at the top, then through the D-Ring on the waist band. Choose a suitable length for the swimmer, and adjust as needed.



## Swim Spa Cover Lifter (Select Models)

The cover lifter needs to be assembled onto the swim spa, please follow the instructions carefully. Some brackets may need to be secured onto the swim spa cabinet. Certain setups may have restrictions - see our 'Cover Lifter Installation Guide' for confirmation and follow the 'Alpine Spas' section of the guide.



Download the 'Cover Lifter Installation Guide' from our support page:  
<http://alpinespas.co.nz/support/>

## PRE-FILL PROCEDURE

# STOP!! BEFORE FILLING, START HERE!



**FAILING TO FOLLOW THIS PROCEDURE MAY RESULT  
IN ISSUES STARTING UP THE SWIM SPA OR VOIDING WARRANTY.**

### Steps to Prepare for Filling:



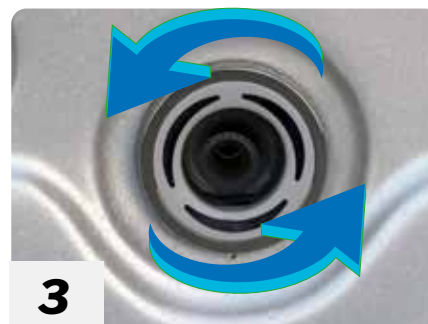
**1**

Check the silver plaque on the side of swim spa cabinet (or see your invoice) to find your swim spa model, then read pages 28 - 55 for more specific info about your swim spa.



**2**

As the swim spa has been water tested during manufacture, excess water residue may have splashed out from within the pipes during transport and may require a quick wipe.



**3**

Open all of the swim spa and spa massage jets by turning them anti-clockwise. This will allow water to flow through all pipes when filling and help avoid air-locks.



**4**

Check the external drain valve(s) is in the 'flow-locked' position (retracted) with the inner twist cap screwed in tight.



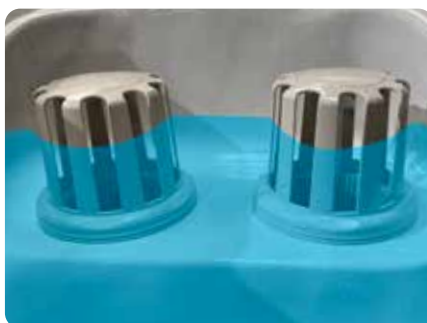
### FILL LEVEL WARNING



**FAILURE TO KEEP SWIM SPA FILLED TO MINIMUM REQUIRED LEVEL (AS SEEN BELOW) WILL RESULT IN DAMAGE TO COMPONENTS. MONITOR WATER LEVEL AND REFILL AFTER USE. SWITCH OFF SWIM IMMEDIATELY IF WATER LEVEL DROPS BELOW FILTER BOX.**



Minimum water level for grate style skimmer.



Minimum water level for floating weir skimmer.

### FILLING THE SWIM SPA - STANDARD WEIR SKIMMER

HYDRO, TRIDENT, OLYMPUS & HIMALAYA



Slide the skimmer cover up, you may need to use some force as it can be quite stiff.



Place your hose inside the skimmer box (remove filters) and begin filling (you may want to place the skimmer cover back on partially to secure the hose in place).



Fill until the water line meets the minimum water level required as indicated in previous 'FILL LEVEL WARNING' diagram. Usually an inch below the headrests.





## FILLING THE SWIM SPA - FLOATING WEIR SKIMMER

### POSEIDON



**1** Grab the top lid and apply light downwards pressure, then twist anti-clockwise to detach (can be quite stiff).



**2** Lift off the lid to reveal the basket grill underneath.



**3** Lift out the basket grill and place aside.



**4** Place the hose into the filter core.



**5** Lightly wedge the basket down to hold the hose in place. Be careful not to force the basket too firmly.



**6** Fill until the water line meets the minimum water level required as indicated in previous 'FILL LEVEL WARNING' diagram. Usually an inch below the headrests.





### INSTALLING THE FILTER CARTRIDGES - STANDARD WEIR FILTER

HYDRO, TRIDENT, OLYMPUS, HIMALAYA

Filters are found packaged inside the swim spa but are not pre-installed.



**1**

Slide the skimmer cover up, you may need to use some force as it can be quite stiff.



**2**

Lift off the skimmer lid to reveal the inner skimmer box.



**3**

Remove the filter draw cover to reveal two empty filter cores beneath.



**4**

Notice the difference between the swim stacking filters, the filter with a thread is the base filter.



**5**

Insert the base filter first, screwing it into the female thread at the base of the filter core.



**6**

Insert the second filter, pressing it firmly into the top of the base filter.



**7**

Repeat steps 4 & 5 into the second filter core.



**8**

Replace the filter draw.



**9**

Replace the skimmer lid by threading the plastic screws back in.

Note: The Himalaya spa zone skimmer uses only two filters which do not stack.



**AVOID DAMAGE TO SWIM SPA & VOIDING WARRANTY - ONLY USE FILTER CARTRIDGES PURCHASED FROM ALPINE SPAS OR SPA SUPPLIES.**



## INSTALLING THE FILTER CARTRIDGES - FLOATING WEIR SKIMMER

### POSEIDON

Filters are found packaged inside the swim spa but are not pre-installed.



Grab the top lid with two hands, apply light downwards pressure and twist anti-clockwise to detach (can be quite stiff).



Lift off the lid to reveal the basket grill underneath.



Lift out the basket grill and place aside.



Insert the filter and place it over the circular holding piece so it sits tight.



Replace the basket grill.



Replace the top lid by gently putting downwards pressure while turning clockwise, until it snaps back into place.



Ensure both top lids are secure in place.



**AVOID DAMAGE TO SWIM SPA & VOIDING WARRANTY - ONLY USE FILTER CARTRIDGES PURCHASED FROM ALPINE SPAS OR SPA SUPPLIES.**





---

### SWITCHING ON & HEATING UP

---

#### **Automatic Startup Procedure**

Upon activating power, the swim spa's topside control panel should light up and the screen will display a series of specific sequences and numbers.

If the screen is blank when you power on, switch off/on again.

#### **Priming**

The swim spa will enter a 'priming mode' whenever it is first initiated or restarted. This is startup function which will run the circulation pump to clear any air in the plumbing for 20 seconds at a time.

The topside control panel will display "PRIMING" or similar to indicate the priming mode state.

Check that the circulation pump has engaged by visually sighting moving/rippling water inside swim spa. Water may flow from the fountains (if open and equipped).

If the priming function fails, an error message (likely to be ER3-Water Prime) will display on the topside control panel - check the troubleshooting guide at the back of this manual for assistance.

---

### HEAT-UP PROCESS

---

#### **Automatic Heating**

After priming has finished, the controller/s are automatically configured to begin heating to 38°C - you will want to reduce this temperature in the swim zone. The circulation pump will engage and the swim spa will begin heating up automatically.

Note: A default snooze timer is in place which disables functions (including heating) between 22:00 – 07:00. This will slow initial heat up time if not temporarily disabled. You must set the time (clock) on the topside control panel and then disable the snooze timer to allow for a fast first time heat-up. See page 23 & 25.

#### **Installing the Cover**

Place your swim spa cover on top of the swim spa and lock it down by installing the clips with the screws. Screws and keys can be found in the waterproof iPack bag.

#### **Heat Up Time**

Depending on environment, it can take up to 12-18 hours to heat the swim spa to the desired temperature (or longer if snooze timer was not temporarily disabled).





## BALANCING & SANITISING THE WATER



**FAILING TO BALANCE AND SANITISE YOUR SWIM SPA CORRECTLY MAY RESULT IN CORROSION OR DAMAGE TO COMPONENTS, WHICH IS NOT COVERED UNDER WARRANTY.**

Just like a car, your swim spa needs care and general maintenance to keep it looking good and running smoothly. An integral part of this maintenance is managing the water quality. To ensure your swim spa is ready to be used at all times, the water needs to be sanitised and balanced to keep it clean and fresh.

You may have received a Water Care Startup Kit with your swim spa (please purchase one if you have not). Follow the 'Water Care Handbook' found with the kit or download a copy from our support page link at the bottom of this page.

Follow the water care startup procedure found in the Water Care Handbook to setup the water for use. It's important to shock the water with sanitizer before use.



Only use Alpine Spas or Spa Supplies approved products (including filter cartridges) in your swim spa. Use of unapproved products may result in your warranty becoming void, please contact us if in doubt.

Your first steps in treating the swim spa water will require the use of the topside control panel. See the quick reference guides on the following pages.



Download our 'Swim spa Water Care Handbook' from our support page: <http://alpinespas.co.nz/support/>  
Scan QR code for direct link.





### TOPSIDE CONTROL PANEL QUICK GUIDES

#### OVERVIEW

The 'topside control panel' is the main control for your swim spa where you can set temperature and turn on pumps and lights. It's also where you will apply settings to control how the swim spa operates. Your swim spa will have two topside control panels controlling their respective zones if you have a 'dual zone' swim spa.

The following pages cover the different topside control panels associated with your particular swim spa model.

These quick guides provide an overview of the buttons and the actions they perform however the panels are capable of multiple functions not explained in the diagram.

Note: If your topside control panel does not light up when powering on, switch the swim spa off and on again.



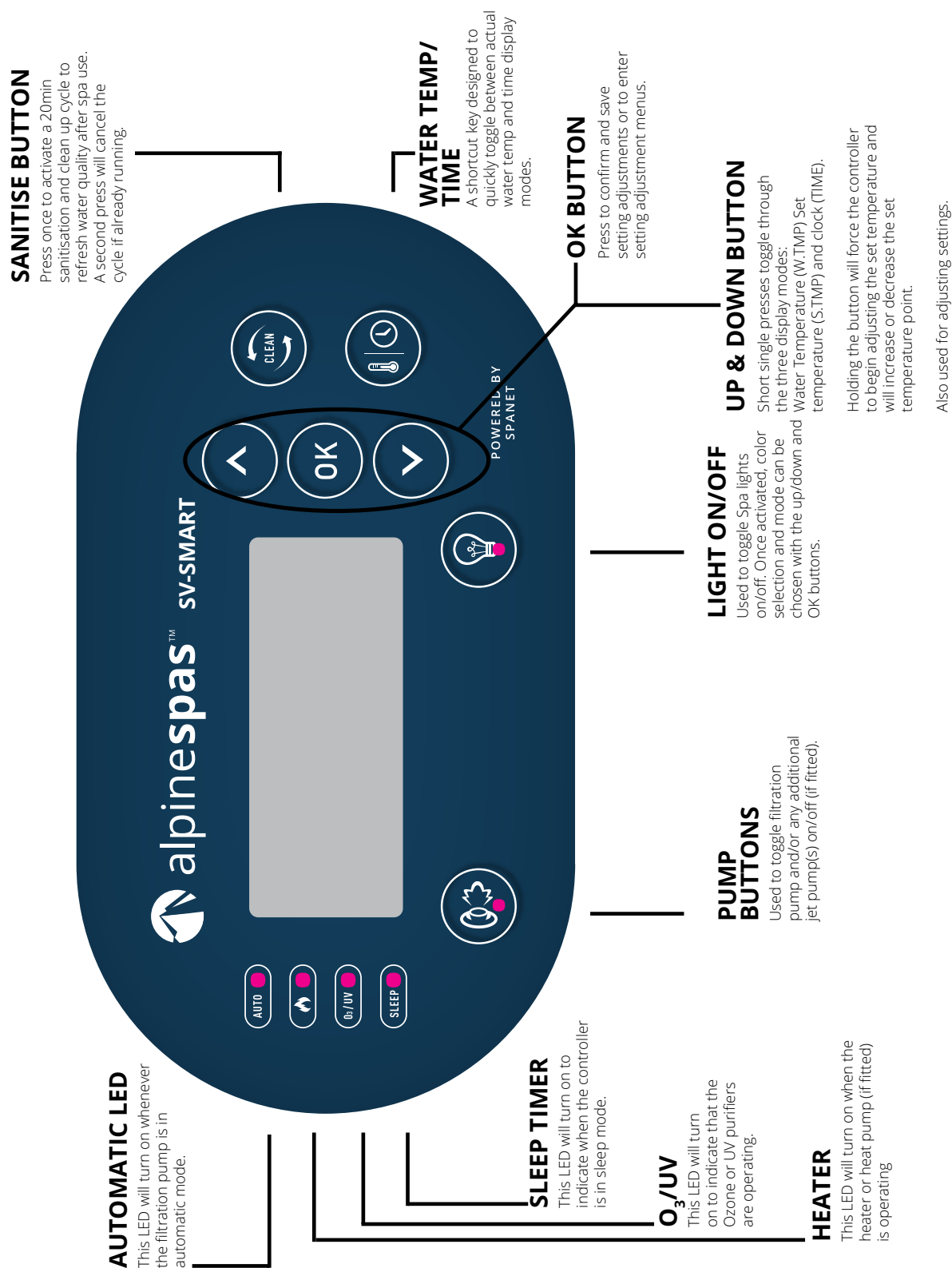


## SPANET SV-SMART

HYDRO SPLASH, TRIDENT SPLASH, OLYMPUS SPLASH, HIMALAYA SPLASH (BOTH ZONES), HIMALAYA SPA ZONE, POSEIDON SPA ZONE.

## HEAT RANGE

10 - 41.0°C



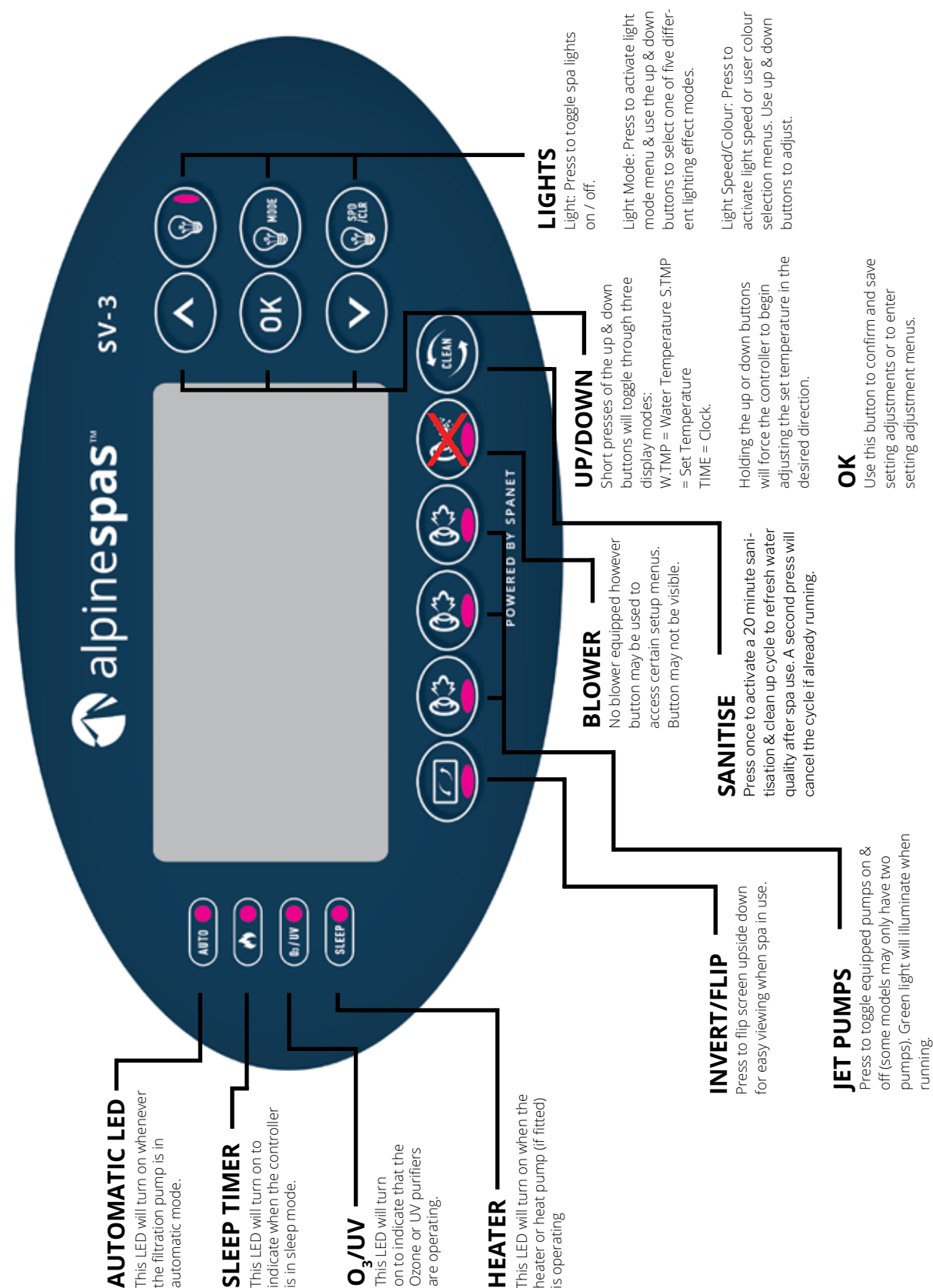


### SPANET SV3-VH

HYDRO SWIM, TRIDENT SWIM, OLYMPUS SWIM, HIMALAYA SWIM, POSEIDON SWIM.

### HEAT RANGE

10 - 41.0°C





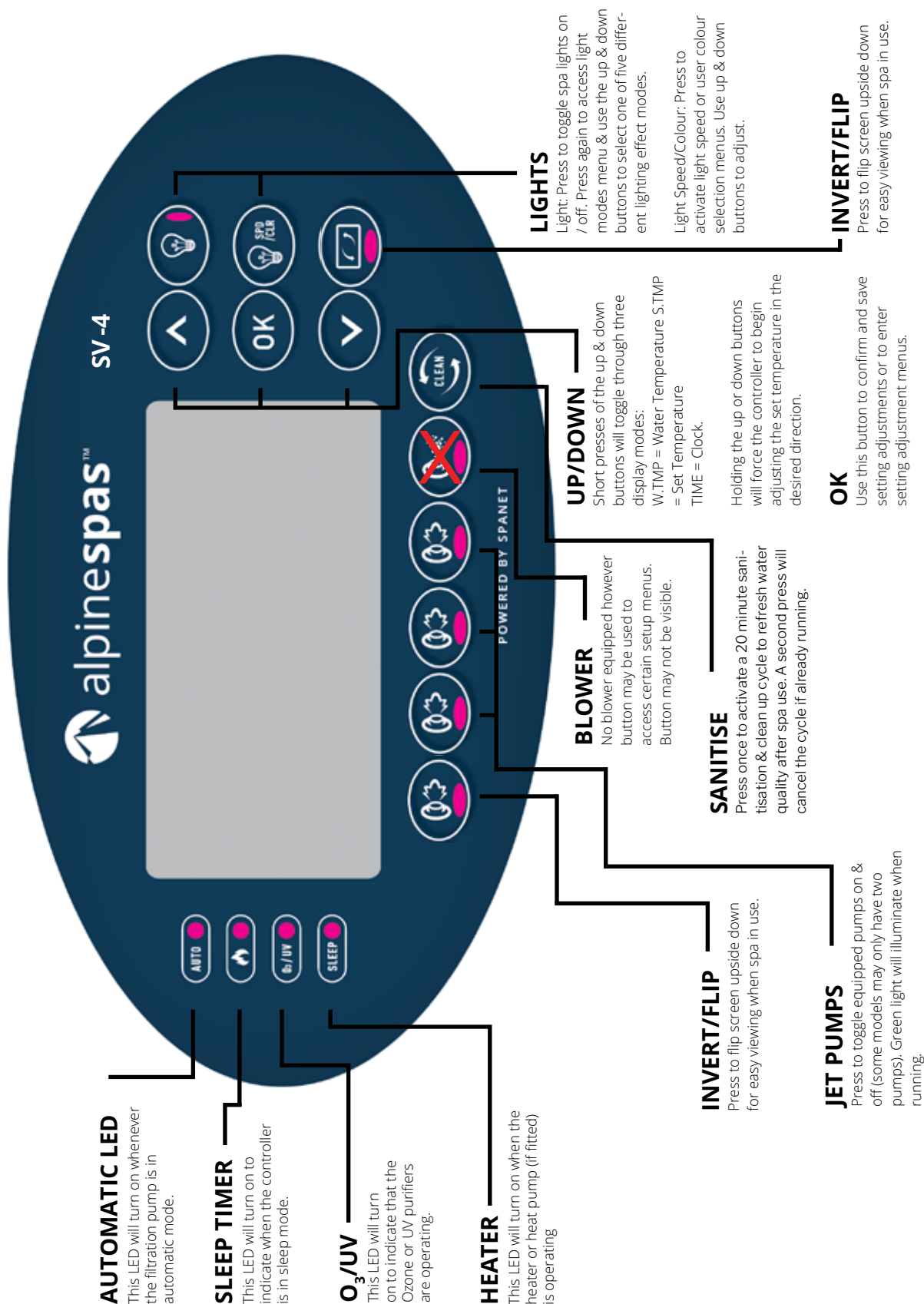


## SPANET SV4-VH

HYDRO SWIM PRO, TRIDENT SWIM PRO, OLYMPUS SWIM PRO,  
HIMALAYA SWIM PRO, POSEIDON SWIM PRO.

## HEAT RANGE

10 - 41.0°C





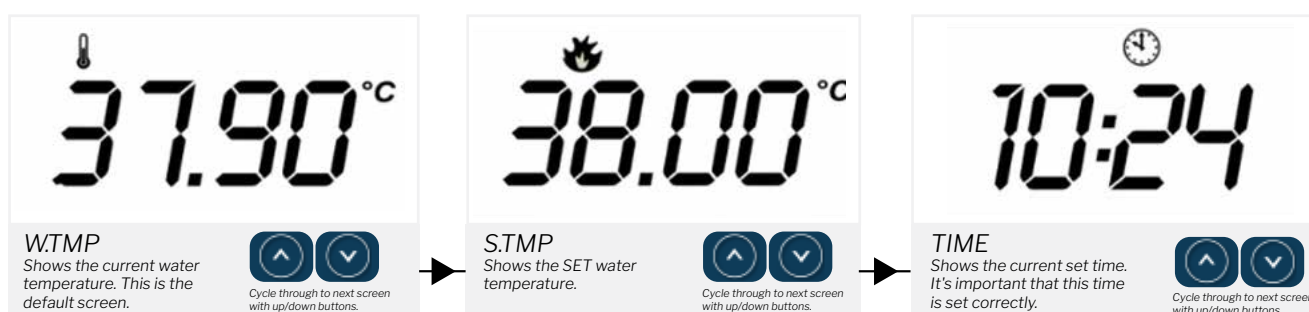
## SWIM SPA OPERATION & SETTINGS

### Post Heat-up

Once the set temperature is reached the circulation pump will stop operating and will only re-engage if the swim spa loses temperature, a filter cycle has begun or the system is polling automatically to check temperature.

### Understanding the Display (Topside Control Panel)

When the swim spa is first powered and priming has completed, the default display will show the current water temperature - this is referred to as WTMP (water temp). You can cycle between the below three display modes by using the 'UP' or 'DOWN' buttons:



It's recommended to leave the display on WTMP to see a clear difference between your set temperature and your current water temperature.

### Changing the Temperature

Pressing or holding the 'UP' or 'DOWN' buttons will adjust the set temperature in the direction indicated on the button in increments of 0.2°C. When the display stops flashing, the swim spa will begin heating to the new set temperature (the swim spa cannot cool the water). The swim spa is already pre-set to 38°C.



### Testing the Components (Jet Pumps)

Turn each individual jet piece inside the swim spa anti-clockwise to open the flow. (Swim Jets cannot be turned.) Then test the jet pump(s) via the topside control panel by pressing:



The 'PUMP' button/s will activate the jet pump/s and high pressured water will flow from the massage jet pieces and swim jets. Turn the diversion valves to switch pressure between jets in seats and the swim flow.



## Setting the Time & Date

Be sure to set the correct date and time on the topside control panel. Vital functions such as filtration, sanitisation cycles and power saving settings are dependent on this being accurate.

Navigate to the TIME display by following the instructions on the previous page ('Understanding the Display') then follow these steps to set the time:



## Swim Spa Behavior - Running Modes

Your swim spa is pre-set to 'NORM' (normal) running mode by default which is the standard operating mode and it's recommend to leave this unchanged as it is the most economical mode for regular use. Normal mode means that the swim spa will always aim to keep the water temperature at the users set temperature so it is ready to use whenever you are.

Other modes are available to use, which may be useful at different times of the year or if you cannot use the swim spa for a set period of time:

| Name | Mode   | Function                                                                                                                  |
|------|--------|---------------------------------------------------------------------------------------------------------------------------|
| NORM | Normal | Normal operation for demand heating and filtration                                                                        |
| AWAY | Away   | Demand heating is DISABLED. Filtration is fixed at 1 hour per day (the keypad will scroll "AWAY MODE" every 60 secs)      |
| WEEK | Week   | Monday to Thursday: Demand heating is DISABLED and filtration fixed at 1 hour per day. Friday to Sunday: Normal Operation |

## Changing the Running Mode

From any display mode:



**DUAL ZONE SWIM SPAS HAVE INDIVIDUAL CONTROL PANELS THAT ARE NOT LINKED. INDIVIDUAL SETTINGS ARE REQUIRED FOR EACH ZONE.**



## Filter Cycles

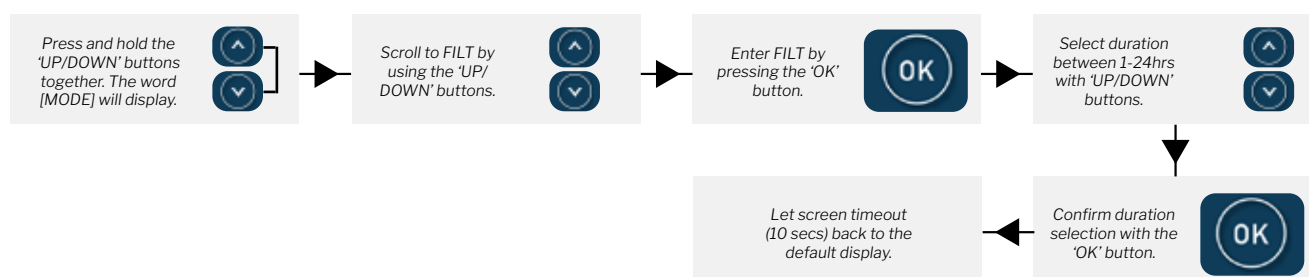
A filter cycle is a period in which the circulation pump is run for a user programmed length of time. This allows for a dedicated period of water sanitising and clean up. Heavier swim spa usage may require longer filter cycle times. At the start of each filter cycle, the main jet pump may run briefly to purge the plumbing.

Filter cycle operation consists of two separate programmable parameters:

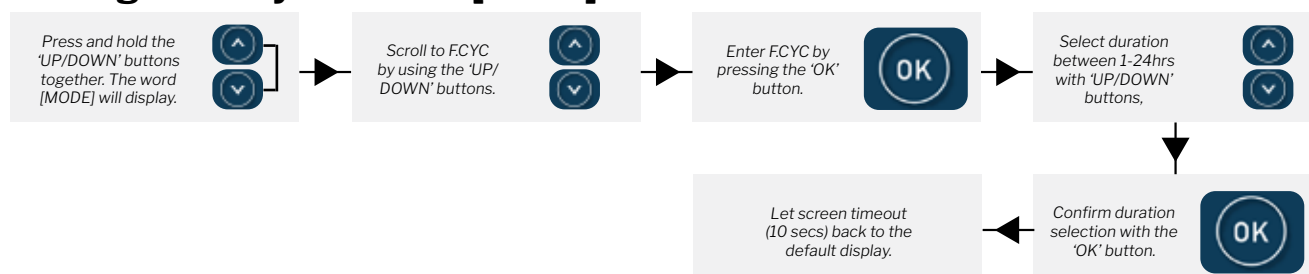
- Duration of filtration per day [FILT] (hours per day, e.g. 4 hours total per day)
- Filter cycle blocks [F.CYC] (time between start of each filter cycle, e.g. 4 hours)

The default settings are: 4 hours of filtration per day over 4 individual 1-hour filter blocks (e.g. every 4 hours, an hour long filter cycle will engage.)

## Setting Filter Cycle Hours of Filtration [FILT]



## Setting Filter Cycle Blocks [F.CYC]:



## Sleep Timers [SNZE]

Sleep timers are a very handy feature which enables the user to stop all swim spa activity during certain times of day or night. While the controller is in sleep mode NO automatic heating or filtration maintenance will occur, however the swim spa can still be operated by manual use without the need to adjust sleep time settings.

There are two individual sleep timers that can be set, each of which can operate on one or more specified weekdays. This enables the user to program different sleep times for different days (i.e. weekdays vs weekends), as well as customizing the settings on a particular day/time where the user may want the swim spa silenced.

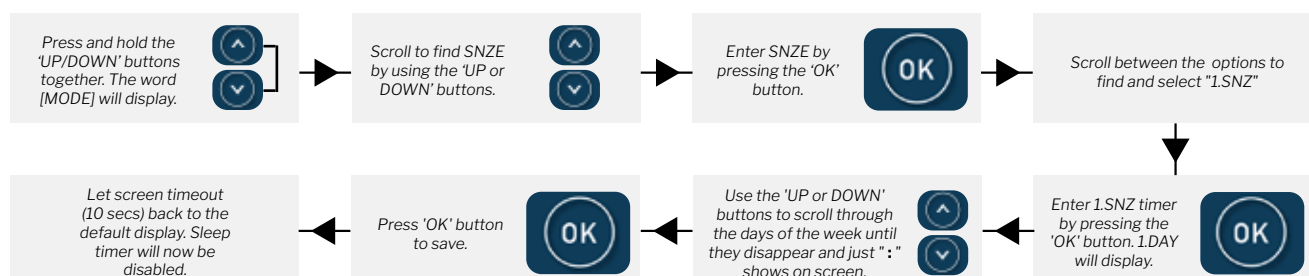
Default Sleep Timer Settings: Sleep Timer 1 (Sat – Fri; Sleep period 22:00 – 07:00).





## Disabling the Default Sleep Timer [SNZE]

Follow these steps if you wish to quickly disable the default sleep timer:

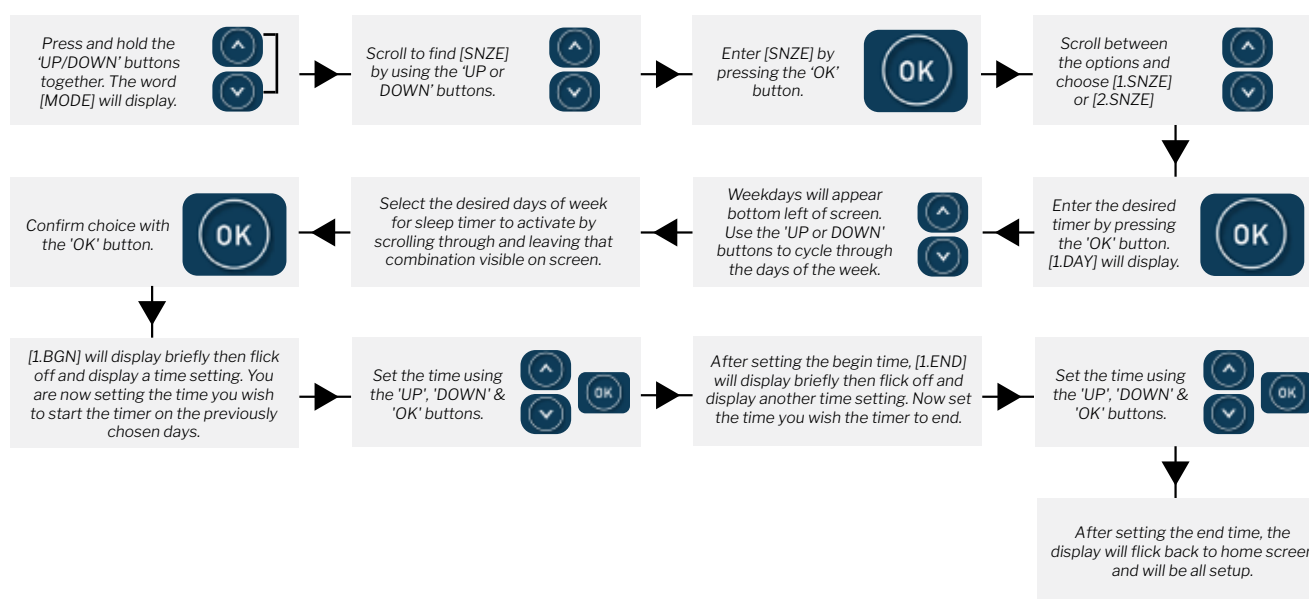


## Setting & Adjusting Sleep Timers [SNZE]

Two individual sleep timers can be set, each of which can operate on one or more specified weekdays. These appear in the form of [1.SNZE] and [2.SNZE] in the settings. Each sleep time setting consists of a week day setting, start time and stop time (refer table below).

| Item  | Description                            | Notes                                                                                                            |
|-------|----------------------------------------|------------------------------------------------------------------------------------------------------------------|
| #.DAY | Selected day of operation              | Sat / Sun / Mon / Tue / Wed / Thu / Fri Sat-Sun / Mon-Fri / Sat-Fri / :<br>Default = Sat-Fri (Note : = disabled) |
| #.BGN | Begin Time<br>Sleep time period begins | Adjustable: 00:00 - 23:59<br>Default = 22:00 (10PM)                                                              |
| #.END | End Time<br>Sleep time period ends     | Adjustable: 00:00 - 23:59<br>Default = 07:00 (7AM)                                                               |

The following instructions are an example of how to adjust one of the sleep timers:



**DUAL ZONE SWIM SPAS HAVE INDIVIDUAL CONTROL PANELS THAT ARE NOT LINKED. INDIVIDUAL SETTINGS ARE REQUIRED FOR EACH ZONE.**



## Power Save [P.SAV]

Power utilities in some regions offer household power meters that can track power usage during different times of the day. This allows the utilities to offer greatly reduced power pricing during off peak power times.

The Power Save (P.SAV) function allows the user to program in the peak power period so the spa control knows not to perform filtration and/or heating during those expensive hours. Instead the controller will take advantage of the competitively priced off peak hours, and run the filtration and/or heating during the off peak hours.

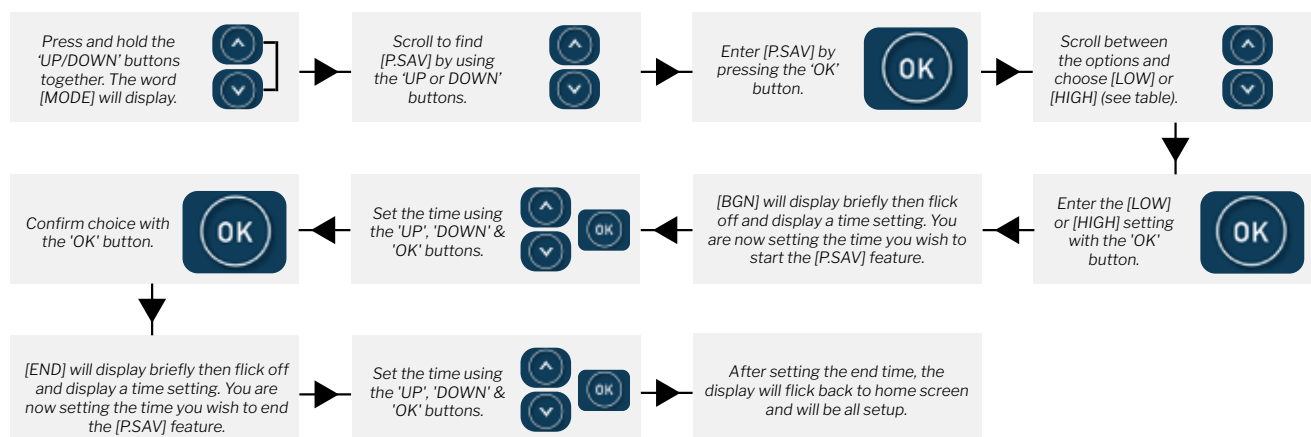
**NOTE:** If P.SAV function is to be used the spa user MUST consider any sleep timers [SNZE] and adjust them accordingly. Sleep timer settings will **OVERRIDE** any P.SAV settings. Running P.SAV function while sleep timer is set will likely result in cold water temperatures due to insufficient heat time available.

## Setting & Adjusting Power Save [P.SAV]

The power save setting consists of a choice of mode, peak power period start time and peak power period end time (refer table below).

| Item  | Description                                                     | Notes                                                                                               |
|-------|-----------------------------------------------------------------|-----------------------------------------------------------------------------------------------------|
| P.SAV | Power Save Mode<br>Functions disabled during peak power periods | OFF = P.SAV disabled (default)<br>LOW = Filtration disabled<br>HIGH = Filtration & Heating disabled |
| BGN   | Begin Time<br>Peak power period begins                          | Adjustable: 00:00 - 23:59<br>Default = 14:00 (2PM)                                                  |
| END   | End Time<br>Peak power period ends                              | Adjustable: 00:00 - 23:59<br>Default = 20:00 (8PM)                                                  |

Reminder that the hours you are programming into the system with the P.SAV feature is for when the heating and/or filtration will **NOT** occur.





## Sanitise/Clean-up Cycle

The sanitise button activates a 20 minute sanitisation cycle that runs the filtration pump and ozone / U.V to filter the swim spa water to restore and refresh water quality. At the start and end of the cycle, the controller will sequentially (one at a time) run a variety of pumps for one minute each to purge the plumbing and clear any unfiltered water trapped in those lines.



## Key-lock Function

The keypad buttons can be locked to prevent accidental key presses or to limit access to certain controller functions. This feature is particularly helpful when swim spa covers are used or where children are present.

There are two types of key-locks available:

Full Lock Mode - locks all buttons so all presses are ineffective until unlocked. To activate full lock, press and hold together:



Partial Lock Mode - only 'PUMPS', 'LIGHT' and 'SANITISE' buttons allowed. To activate partial lock, press and hold together:



**NOTE:** To unlock, repeat the sequence. Pumps are labeled A, B, C from left to right on the control panel. A spa model without a physical 'pump b' will still have a 'ghost button' where 'pump b' would be located and can still be pressed to activate the partial lock.

## Automatic Daily Sanitise Cycle Run Time

The system will activate a 10 minute daily sanitisation cycle at 9am each day. Each pump is operated to purge pipe work whilst operating the filtration pump.



**DUAL ZONE SWIM SPAS HAVE INDIVIDUAL CONTROL PANELS THAT ARE NOT LINKED. INDIVIDUAL SETTINGS ARE REQUIRED FOR EACH ZONE.**



# HYDRO **SPLASH**

## Key Specifications

|                   |                                       |
|-------------------|---------------------------------------|
| Propulsion System | 2x Swim Jets                          |
| Water Pumps       | 1x 3HP SpaNet <sup>®</sup> Water Pump |
| Control System    | SpaNet <sup>®</sup> SV-Smart          |
| Heating System    | 3kW SpaNet <sup>®</sup> Heater        |
| Dimensions        | 390 x 228 x 137cm                     |
| Capacity          | 5250L                                 |
| Dry Weight        | 1235kg                                |
| Power             | 15 Amps                               |

## Touch pad control

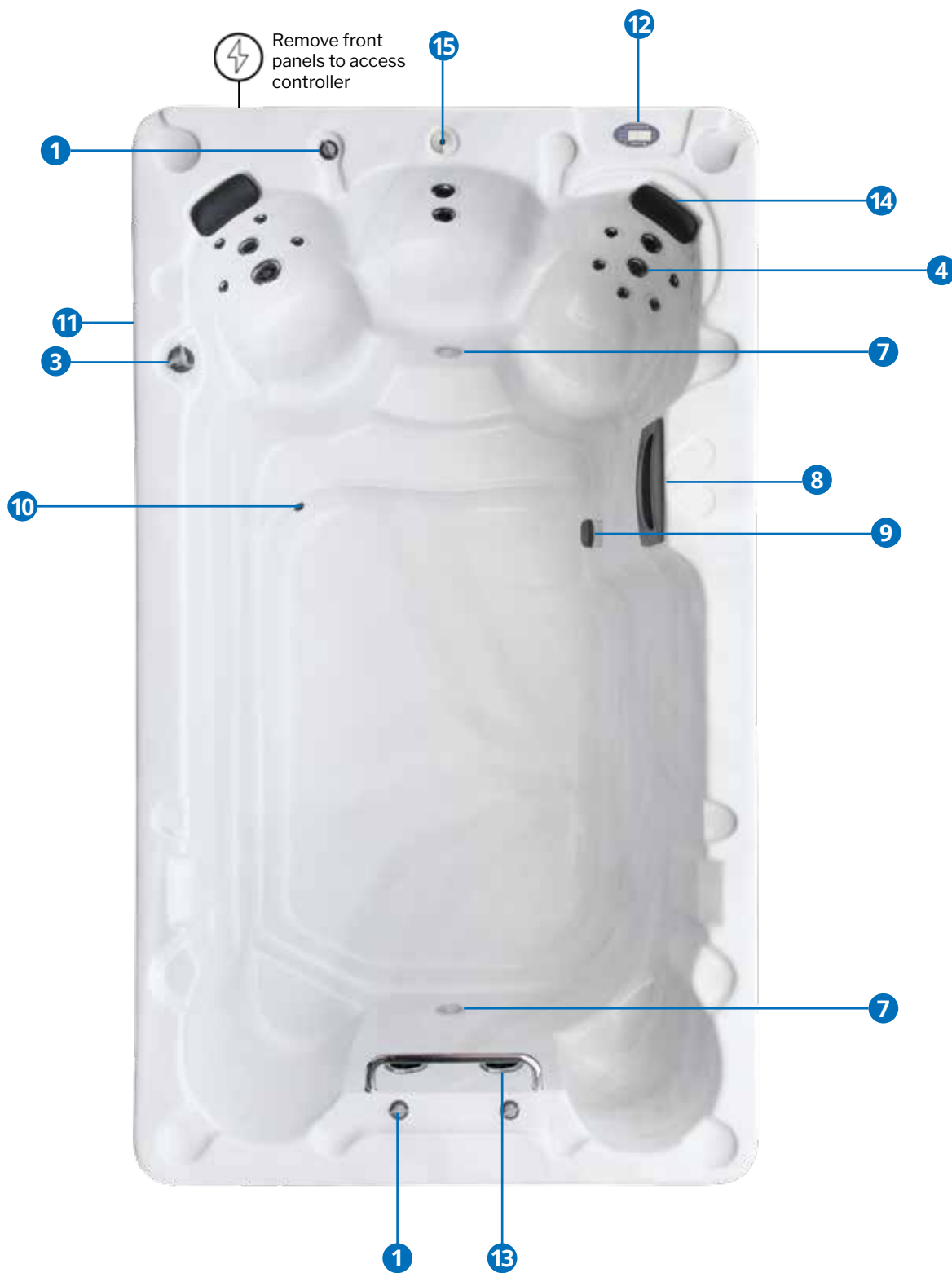


The jet button labeled **A** turns on the swim jets to create the flow. The pump powering the swim jets is also shared with the massage jets. Turn the primary diverter (no.3) left or right to divert the pressure between the swim jets and the massage jets as required.





## Identify labeled parts on pages 56-58.





# HYDRO SWIM

## Key Specifications

|                   |                                                                 |
|-------------------|-----------------------------------------------------------------|
| Propulsion System | 3x Focus Swim Jets                                              |
| Water Pumps       | 3x 3HP SpaNet® Water Pumps<br>1x WhisperQuiet™ Circulation Pump |
| Control System    | SpaNet® SV3                                                     |
| Heating System    | 5.25kW SpaNet® Heater                                           |
| Dimensions        | 390 x 228 x 137cm                                               |
| Capacity          | 5250L                                                           |
| Dry Weight        | 1235kg                                                          |
| Power             | 45 Amps                                                         |

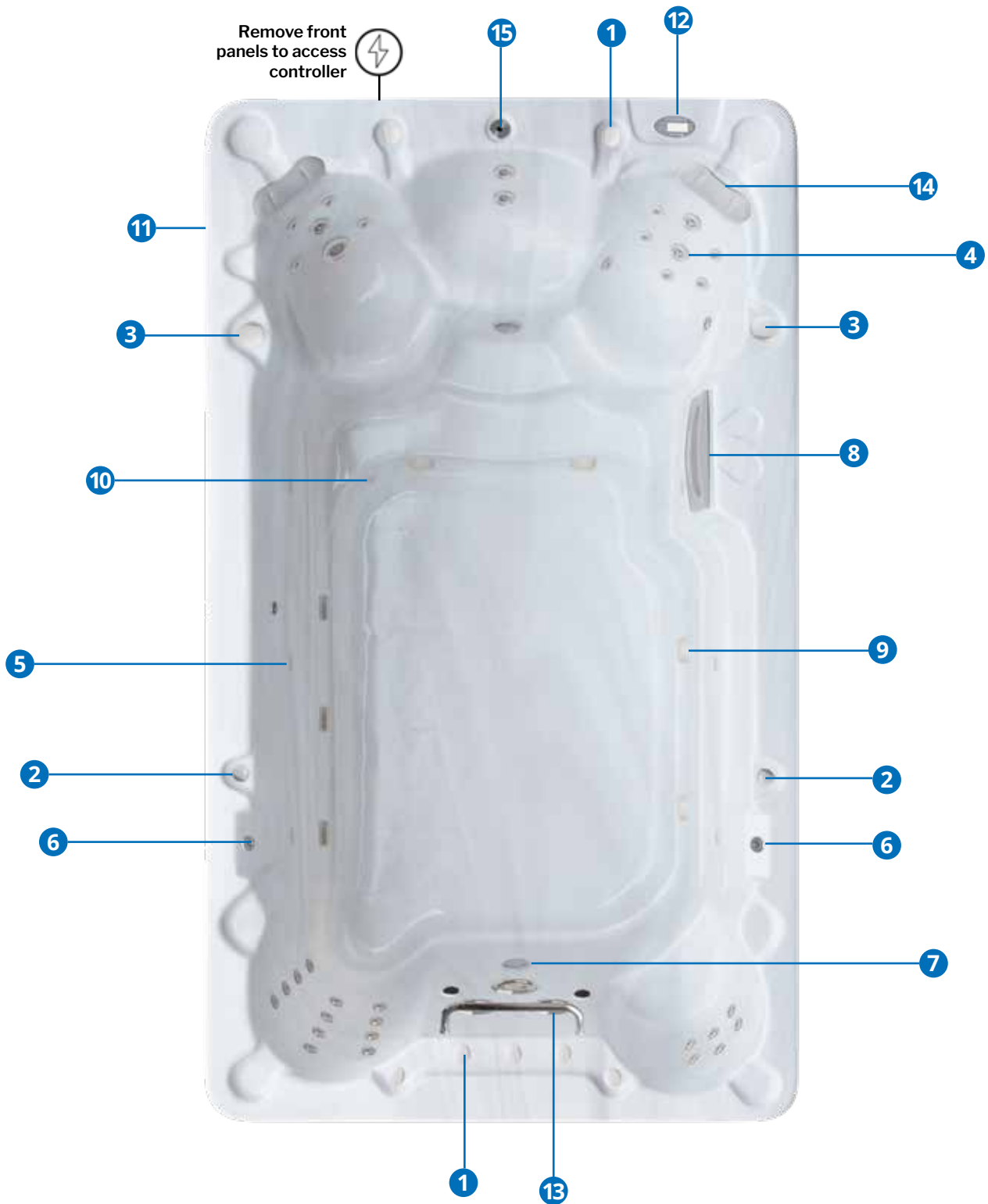
## Touch Pad Propulsion System Control



Jet buttons **A**, **B** and **C** turn on the swim jets to create the swim flow. Pumps powering the swim jets are also shared with the massage jets. Turn the primary diverter/s (no.3) left or right to divert the pressure between the swim jets and the massage jets as required.



## Identify labeled parts on pages 56-58.





# HYDRO SWIM PRO

## Key Specifications

|                   |                                                                 |
|-------------------|-----------------------------------------------------------------|
| Propulsion System | 4x Focus Swim Jets                                              |
| Water Pumps       | 4x 3HP SpaNet® Water Pumps<br>1x WhisperQuiet™ Circulation Pump |
| Control System    | SpaNet® SV4                                                     |
| Heating System    | 5.25kW SpaNet® Heater                                           |
| Dimensions        | 390 x 228 x 137cm                                               |
| Capacity          | 5250L                                                           |
| Dry Weight        | 1235kg                                                          |
| Power             | 45-60 Amps                                                      |

## Touch Pad Propulsion System Control

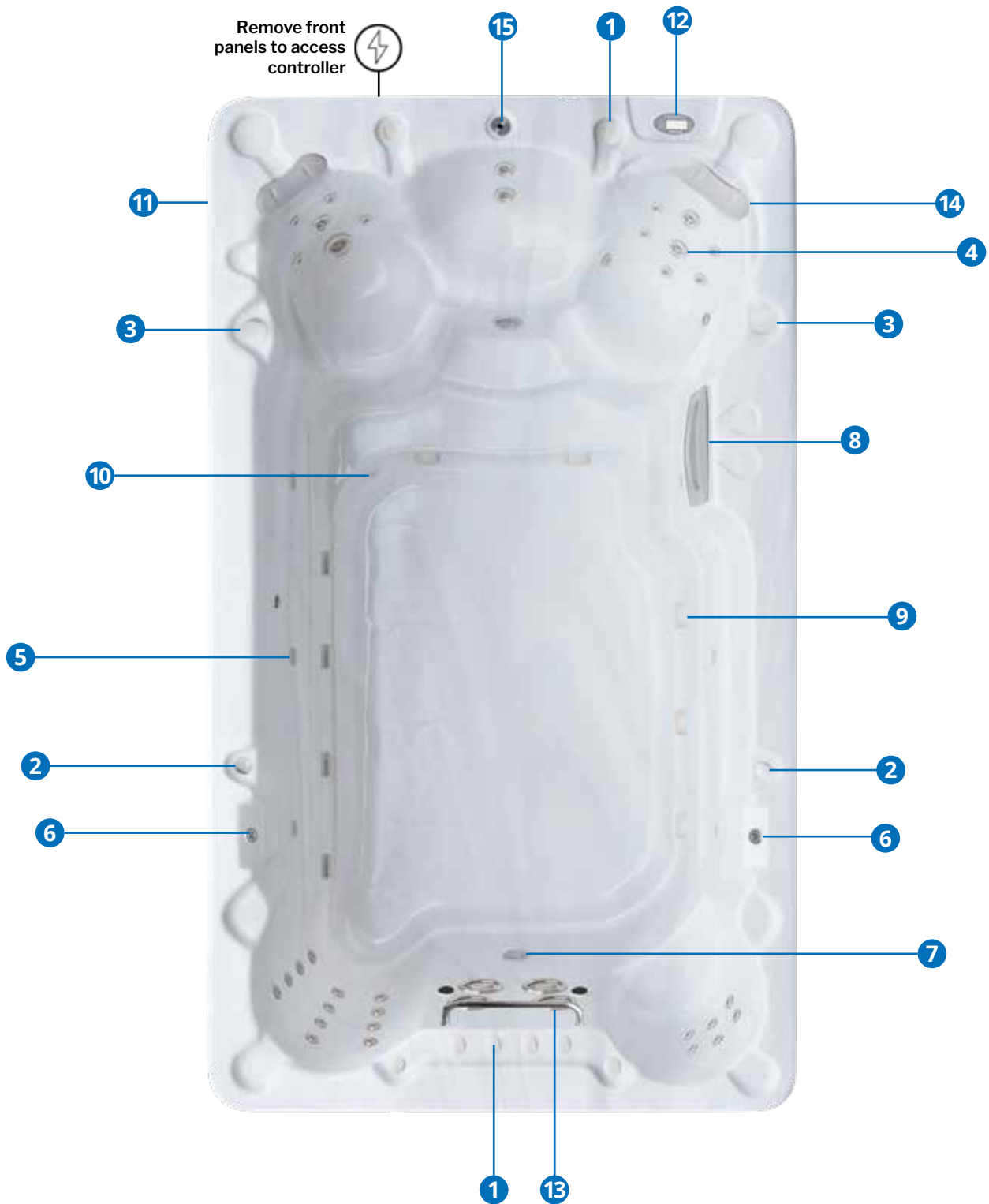


Jet buttons **A**, **B**, **C** and **D** turn on the swim jets to create the swim flow. Pumps powering the swim jets may also be shared with the massage jets. Turn the primary diverter (no.3) left or right to divert the pressure between the swim jets and the massage jets as required.





## Identify labeled parts on pages 56-58.





# TRIDENT **SPLASH**

## Key Specifications

|                   |                           |
|-------------------|---------------------------|
| Propulsion System | 2x Swim Jets              |
| Water Pumps       | 1x 3HP SpaNet® Water Pump |
| Control System    | SpaNet® SV-Smart          |
| Heating System    | 3kW SpaNet® Heater        |
| Dimensions        | 421 x 228 x 137cm         |
| Capacity          | 5720L                     |
| Dry Weight        | 1360kg                    |
| Power             | 15 Amps                   |

## Touch Pad Propulsion System Control



The jet button labeled **A** turns on the swim jets to create the flow. The pump powering the swim jets is also shared with the massage jets. Turn the primary diverter (no.3) left or right to divert the pressure between the swim jets and the massage jets as required.



## Identify labeled parts on pages 56-58.





# TRIDENT **SWIM**

## Key Specifications

|                   |                                                                                         |
|-------------------|-----------------------------------------------------------------------------------------|
| Propulsion System | 3x Focus Swim Jets                                                                      |
| Water Pumps       | 3x 3HP SpaNet <sup>®</sup> Water Pumps<br>1x WhisperQuiet <sup>™</sup> Circulation Pump |
| Control System    | SpaNet <sup>®</sup> SV3                                                                 |
| Heating System    | 5.25kW SpaNet <sup>®</sup> Heater                                                       |
| Dimensions        | 421 x 228 x 137cm                                                                       |
| Capacity          | 5720L                                                                                   |
| Dry Weight        | 1360kg                                                                                  |
| Power             | 45 Amps                                                                                 |

## Touch Pad Propulsion System Control



Jet buttons **A**, **B** and **C** turn on the swim jets to create the swim flow. Pumps powering the swim jets may also be shared with the massage jets. Turn the primary diverter (no.3) left or right to divert the pressure between the swim jets and the massage jets as required.





## Identify labeled parts on pages 56-58.





# TRIDENT **SWIM PRO**

## Key Specifications

|                   |                                                                 |
|-------------------|-----------------------------------------------------------------|
| Propulsion System | 4x Focus Swim Jets                                              |
| Water Pumps       | 4x 3HP SpaNet® Water Pumps<br>1x WhisperQuiet™ Circulation Pump |
| Control System    | SpaNet® SV4                                                     |
| Heating System    | 5.25kW SpaNet® Heater                                           |
| Dimensions        | 421 x 228 x 137cm                                               |
| Capacity          | 5720L                                                           |
| Dry Weight        | 1360kg                                                          |
| Power             | 45-60 Amps                                                      |

## Touch Pad Propulsion System Control



Jet buttons **A**, **B**, **C** and **D** turn on the swim jets to create the swim flow. Pumps powering the swim jets may also be shared with the massage jets. Turn the primary diverter (no.3) left or right to divert the pressure between the swim jets and the massage jets as required.



## Identify labeled parts on pages 56-58.





# OLYMPUS **SPLASH**

## Key Specifications

|                   |                           |
|-------------------|---------------------------|
| Propulsion System | 2x Swim Jets              |
| Water Pumps       | 1x 3HP SpaNet® Water Pump |
| Control System    | SpaNet® SV-Smart          |
| Heating System    | 3kW SpaNet® Heater        |
| Dimensions        | 500 x 228 x 137cm         |
| Capacity          | 6475L                     |
| Dry Weight        | 1530kg                    |
| Power             | 15 Amps                   |

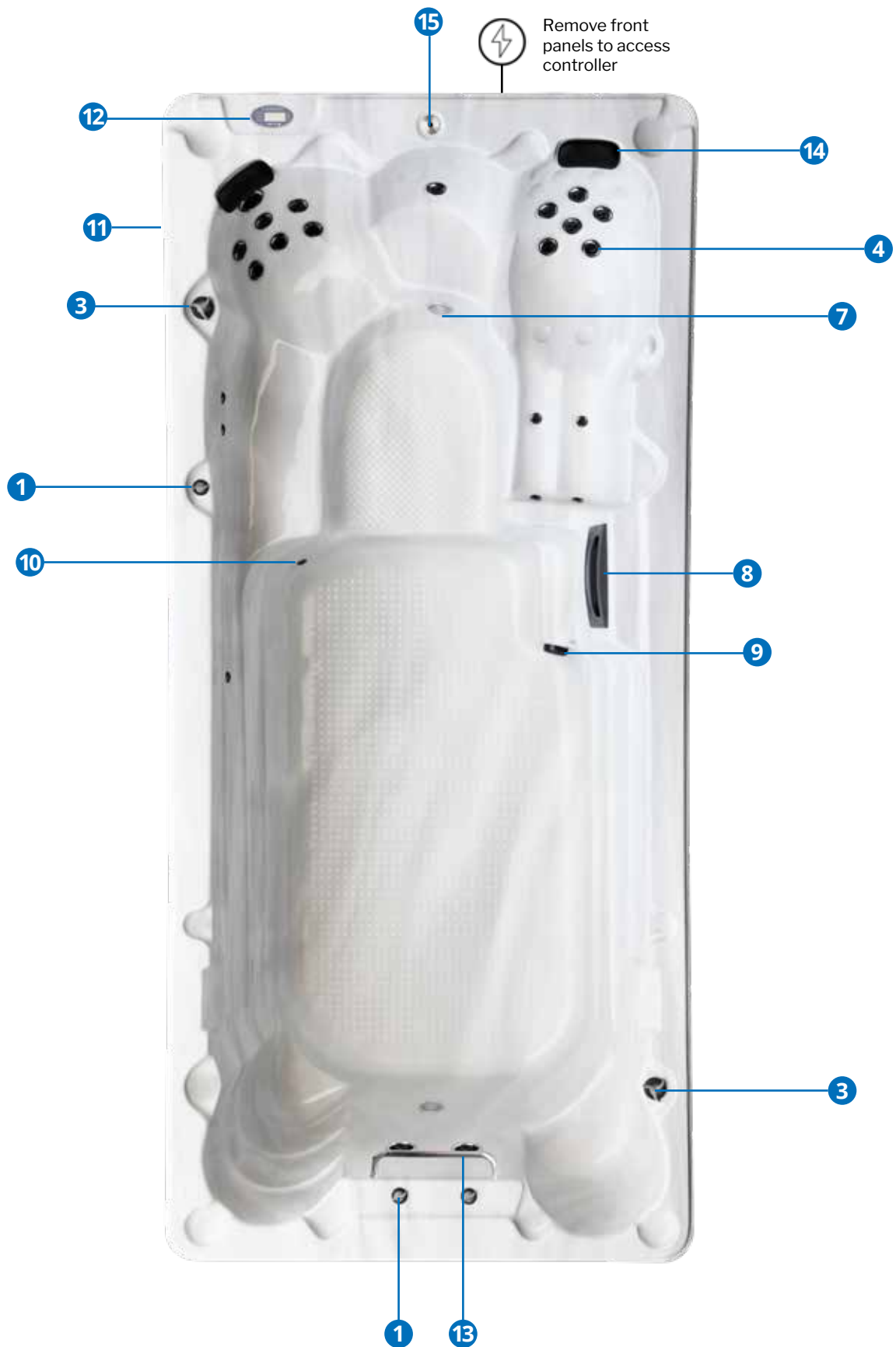
## Touch Pad Propulsion System Control



The jet button labeled **A** turns on the swim jets to create the flow. The pump powering the swim jets is also shared with the massage jets. Turn the primary diverter (no.3) left or right to divert the pressure between the swim jets and the massage jets as required.



## Identify labeled parts on pages 56-58.







# OLYMPUS **SWIM**

## Key Specifications

|                   |                                                                                         |
|-------------------|-----------------------------------------------------------------------------------------|
| Propulsion System | 3x Focus Swim Jets                                                                      |
| Water Pumps       | 3x 3HP SpaNet <sup>®</sup> Water Pumps<br>1x WhisperQuiet <sup>™</sup> Circulation Pump |
| Control System    | SpaNet <sup>®</sup> SV3                                                                 |
| Heating System    | 5.25kW SpaNet <sup>®</sup> Heater                                                       |
| Dimensions        | 500 x 228 x 137cm                                                                       |
| Capacity          | 6475L                                                                                   |
| Dry Weight        | 1530kg                                                                                  |
| Power             | 45 Amps                                                                                 |

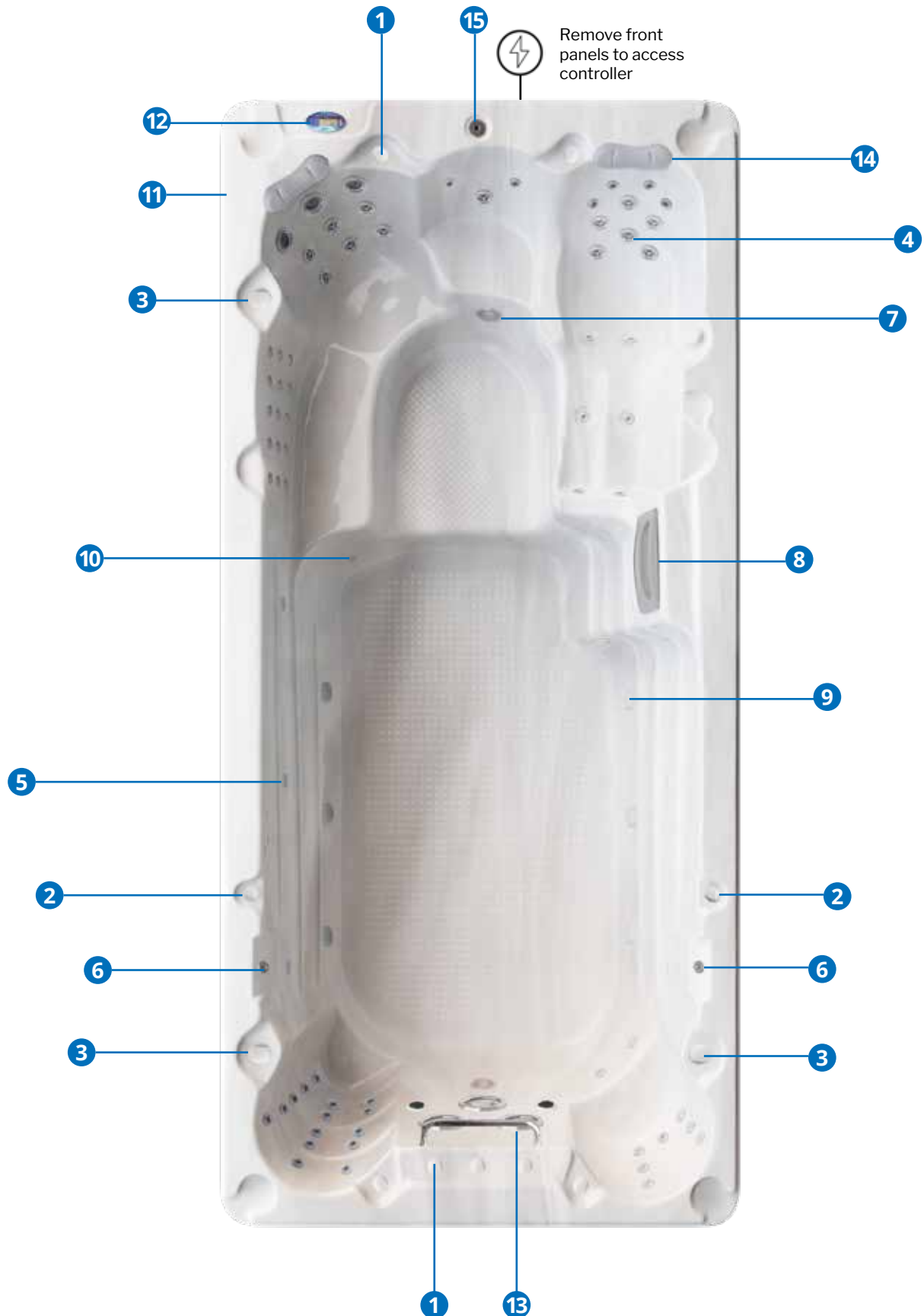
## Touch Pad Propulsion System Control



Jet buttons **A**, **B** and **C** turn on the swim jets to create the swim flow. Pumps powering the swim jets may also be shared with the massage jets. Turn the primary diverter (no.3) left or right to divert the pressure between the swim jets and the massage jets as required.



## Identify labeled parts on pages 56-58.





# OLYMPUS **SWIM PRO**

## Key Specifications

|                   |                                                                 |
|-------------------|-----------------------------------------------------------------|
| Propulsion System | 4x Focus Swim Jets                                              |
| Water Pumps       | 4x 3HP SpaNet® Water Pumps<br>1x WhisperQuiet™ Circulation Pump |
| Control System    | SpaNet® SV4                                                     |
| Heating System    | 5.25kW SpaNet® Heater                                           |
| Dimensions        | 500 x 228 x 137cm                                               |
| Capacity          | 6475L                                                           |
| Dry Weight        | 1530kg                                                          |
| Power             | 45-60 Amps                                                      |

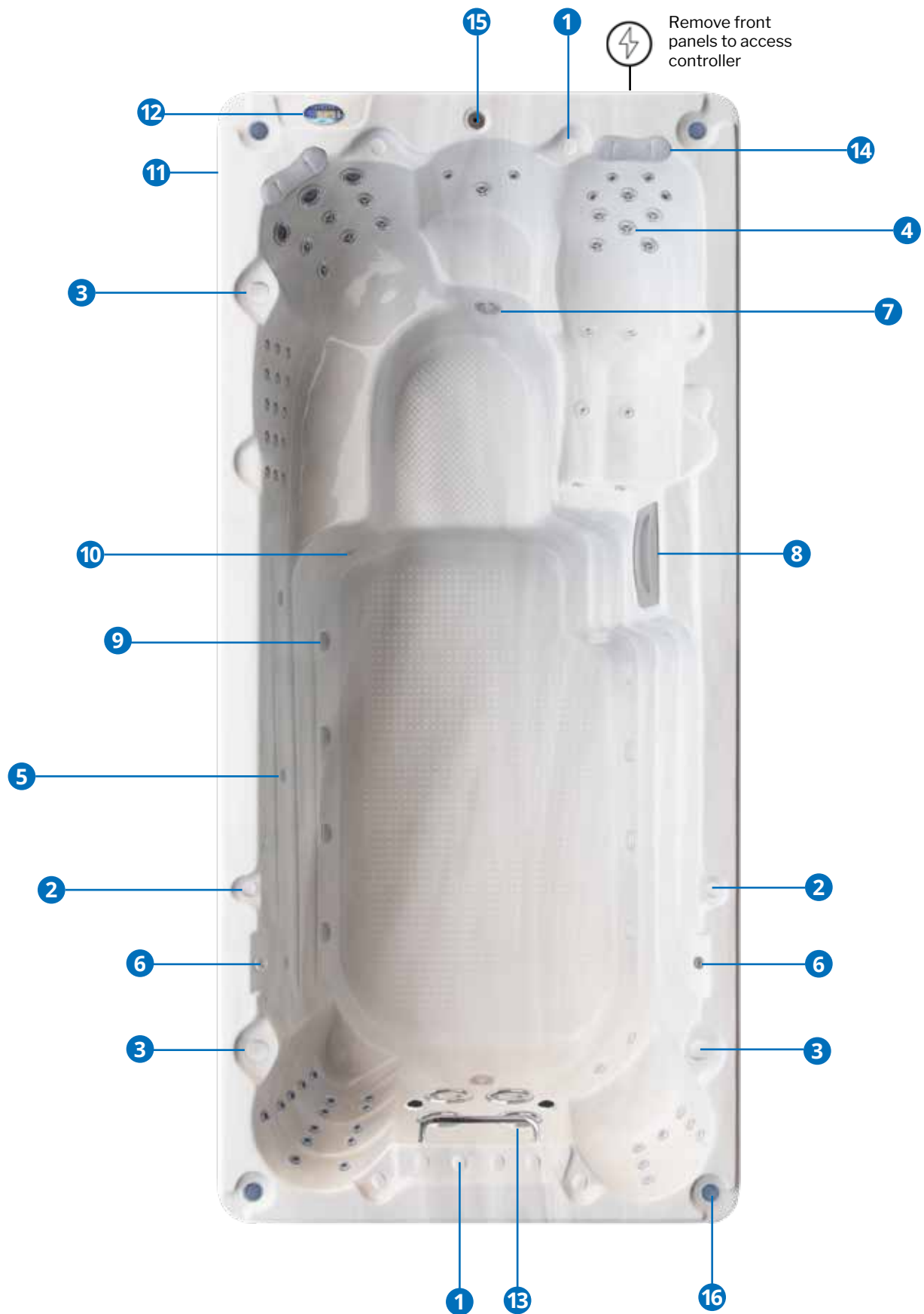
## Touch Pad Propulsion System Control



Jet buttons **A**, **B**, **C** and **D** turn on the swim jets to create the swim flow. Pumps powering the swim jets may also be shared with the massage jets. Turn the primary diverter (no.3) left or right to divert the pressure between the swim jets and the massage jets as required.



## Identify labeled parts on pages 56-58.





# HIMALAYA **SPLASH**

## Key Specifications

|                   |                                                                                                    |
|-------------------|----------------------------------------------------------------------------------------------------|
| Propulsion System | 2x Swim Jets                                                                                       |
| Water Pumps       | 2x 3HP SpaNet® Water Pumps (1x Swim & 1x Spa Zone)<br>1x WhisperQuiet™ Circulation Pump (Spa Zone) |
| Control System    | 2x SpaNet® SV-Smart (1x Swim & 1x Spa Zone)                                                        |
| Heating System    | 2x 3kW SpaNet® Heater (1x Swim & 1x Spa Zone)                                                      |
| Dimensions        | 594 x 228 x 137cm                                                                                  |
| Capacity          | 7640L                                                                                              |
| Dry Weight        | 1835kg                                                                                             |
| Power             | 15 Amps (Swim Zone) & 15 Amps (Spa Zone)                                                           |

## Touch Pad Swim Jets Control (Swim Zone)



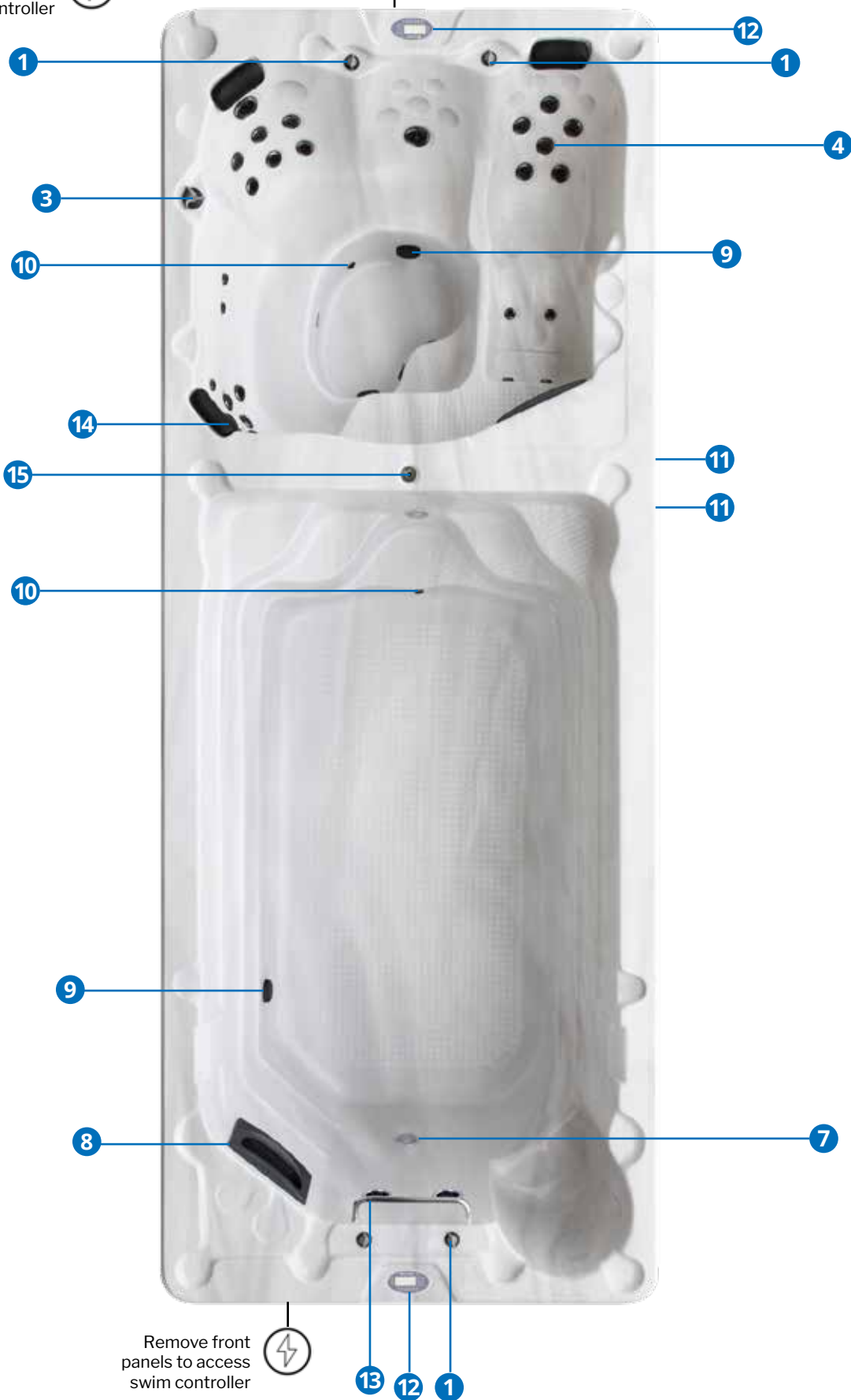
The jet button labeled **A** turns on the swim jets to create the flow. The pump powering the swim jets is also shared with the massage jets. Turn the primary diverter (no.3) left or right to divert the pressure between the swim jets and the massage jets as required.





## Identify labeled parts on pages 56-58.

Remove front  
panels to access  
spa controller



Remove front  
panels to access  
swim controller





# HIMALAYA SWIM

## Key Specifications

|                   |                                                                                                                  |
|-------------------|------------------------------------------------------------------------------------------------------------------|
| Propulsion System | 3x Focus Swim Jets                                                                                               |
| Water Pumps       | 4x 3HP SpaNet® Water Pumps (3x Swim & 1x Spa Zone)<br>2x WhisperQuiet™ Circulation Pumps (1x Swim & 1x Spa Zone) |
| Control System    | SpaNet® SV3 (Swim Zone)<br>SpaNet® SV-Smart (Spa Zone)                                                           |
| Heating System    | 5.25kW SpaNet® Heater (Swim Zone)<br>3kW SpaNet® Heater (Spa Zone)                                               |
| Dimensions        | 594 x 228 x 137cm                                                                                                |
| Capacity          | 7640L                                                                                                            |
| Dry Weight        | 1835kg                                                                                                           |
| Power             | 45 Amps (Swim Zone) & 15 Amps (Spa Zone)                                                                         |

## Touch Pad Propulsion System Control (Swim Zone)

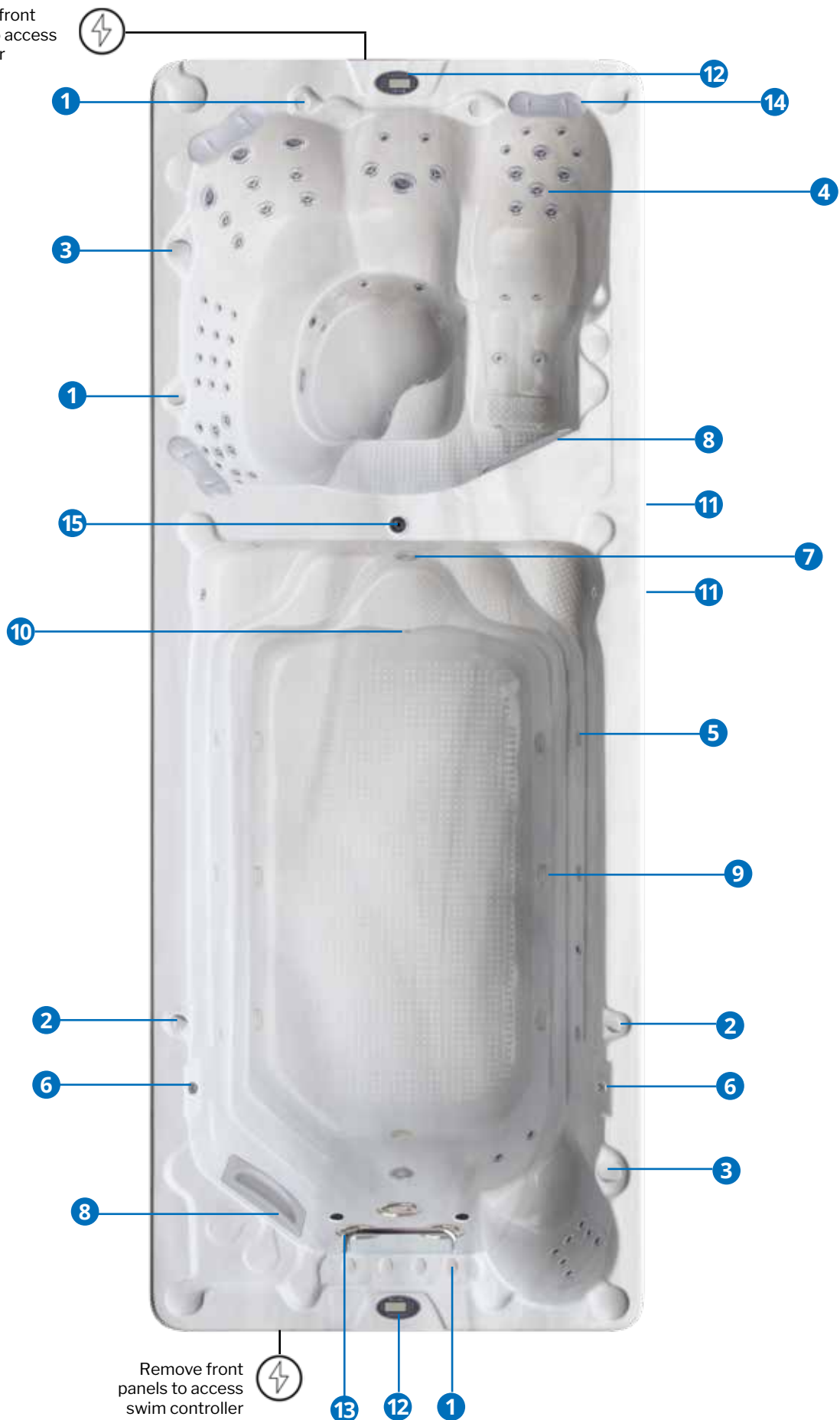


Jet buttons **A**, **B** and **C** turn on the swim jets to create the swim flow. Pumps powering the swim jets may also be shared with the massage jets. Turn the primary diverter (no.3) left or right to divert the pressure between the swim jets and the massage jets as required.



## Identify labeled parts on pages 56-58.

Remove front panels to access controller





# HIMALAYA **SWIM PRO**

## Key Specifications

|                   |                                                                                                                  |
|-------------------|------------------------------------------------------------------------------------------------------------------|
| Propulsion System | 4x Focus Swim Jets                                                                                               |
| Water Pumps       | 5x 3HP SpaNet® Water Pumps (4x Swim & 1x Spa Zone)<br>2x WhisperQuiet™ Circulation Pumps (1x Swim & 1x Spa Zone) |
| Control System    | SpaNet® SV4 (Swim Zone)<br>SpaNet® SV-Smart (Spa Zone)                                                           |
| Heating System    | 5.25kW SpaNet® Heater (Swim Zone)<br>3kW SpaNet® Heater (Spa Zone)                                               |
| Dimensions        | 594 x 228 x 137cm                                                                                                |
| Capacity          | 7640L                                                                                                            |
| Dry Weight        | 1835kg                                                                                                           |
| Power             | 45-60 Amps (Swim Zone) & 15 Amps (Spa Zone)                                                                      |

## Touch Pad Propulsion System Control (Swim Zone)

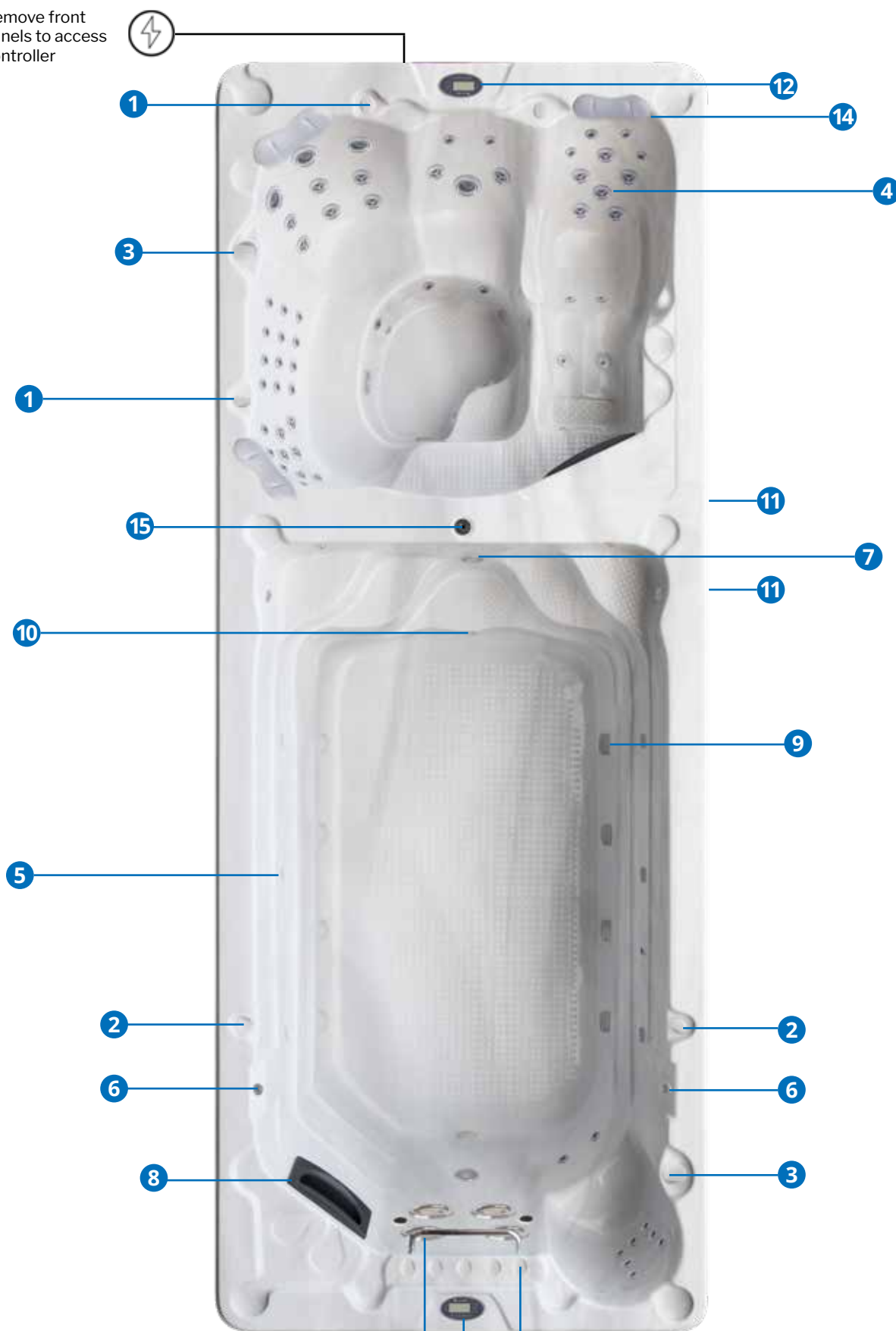


Jet buttons **A**, **B**, **C** and **D** turn on the swim jets to create the swim flow. Pumps powering the swim jets may also be shared with the massage jets. Turn the primary diverter (no.3) left or right to divert the pressure between the swim jets and the massage jets as required.



## Identify labeled parts on pages 56-58.

Remove front panels to access controller



Remove front panels to access swim controller



13 12 1



# POSEIDON **SWIM**

## Key Specifications

|                   |                                                                                                                  |
|-------------------|------------------------------------------------------------------------------------------------------------------|
| Propulsion System | 3x Focus Swim Jets                                                                                               |
| Water Pumps       | 4x 3HP SpaNet® Water Pumps (3x Swim & 1x Spa Zone)<br>2x WhisperQuiet™ Circulation Pumps (1x Swim & 1x Spa Zone) |
| Control System    | SpaNet® SV3 (Swim Zone)<br>SpaNet® SV-Smart (Spa Zone)                                                           |
| Heating System    | 5.25kW SpaNet® Heater (Swim Zone)<br>3kW SpaNet® Heater (Spa Zone)                                               |
| Dimensions        | 594 x 226 x 152cm                                                                                                |
| Capacity          | 10350L                                                                                                           |
| Dry Weight        | 2100kg                                                                                                           |
| Power             | 45 Amps (Swim Zone) & 15 Amps (Spa Zone)                                                                         |

## Touch Pad Propulsion System Control (Swim Zone)

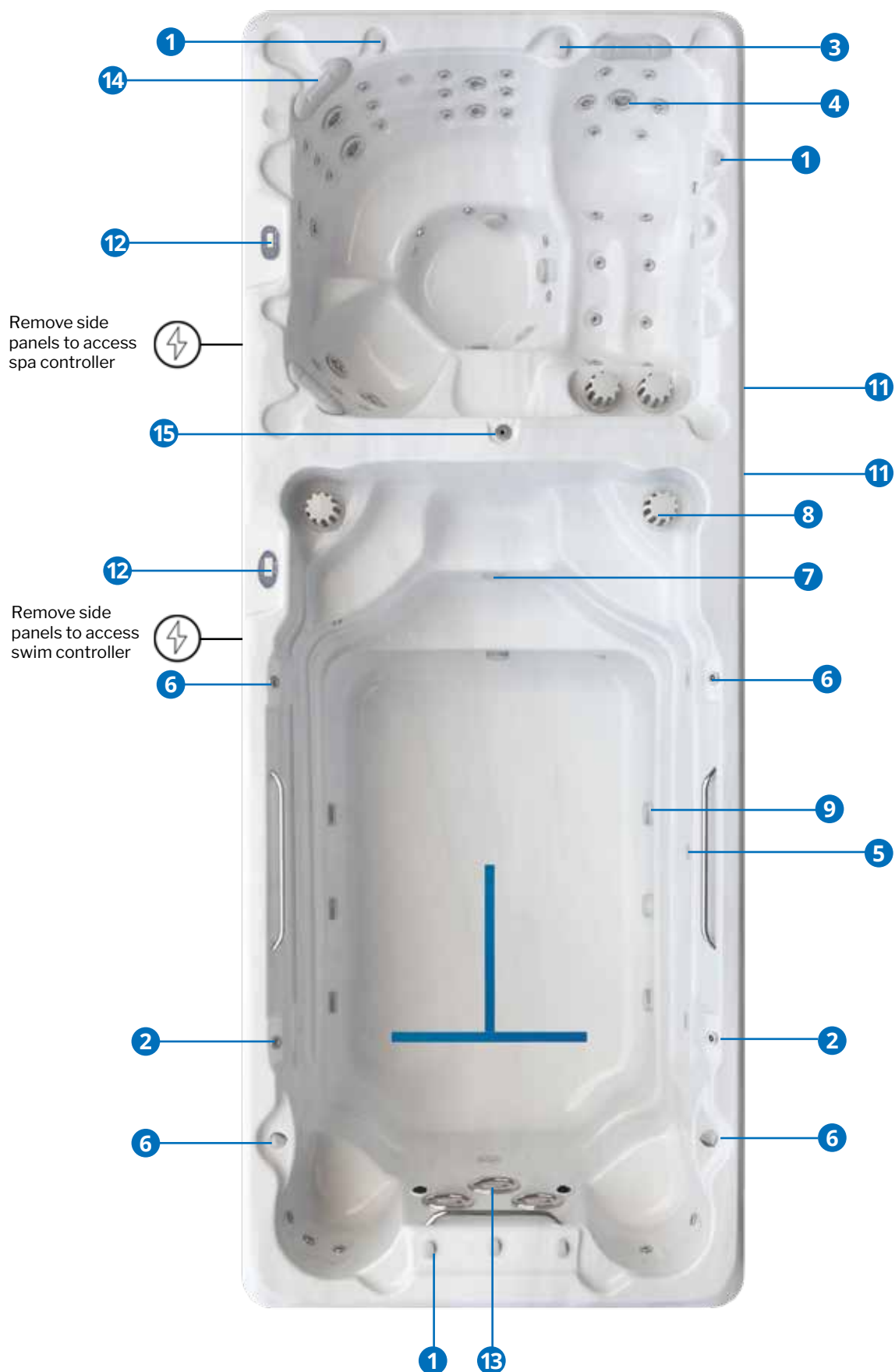


Jet buttons **A**, **B** and **C** turn on the swim jets to create the swim flow. Pumps powering the swim jets may also be shared with the massage jets. Turn the primary diverter (no.3) left or right to divert the pressure between the swim jets and the massage jets as required.





## Identify labeled parts on pages 56-58.





# POSEIDON **SWIM PRO**

## Key Specifications

|                   |                                                                                                                     |
|-------------------|---------------------------------------------------------------------------------------------------------------------|
| Propulsion System | 4x Focus Swim Jets                                                                                                  |
| Water Pumps       | 5x 3HP SpaNet® Water Pumps (4x Swim & 1x Spa Zone)<br>2x WhisperQuiet™ Circulation Pumps<br>(1x Swim & 1x Spa Zone) |
| Control System    | SpaNet® SV4 (Swim Zone)<br>SpaNet® SV-Smart (Spa Zone)                                                              |
| Heating System    | 5.25kW SpaNet® Heater (Swim Zone)<br>3kW SpaNet® Heater (Spa Zone)                                                  |
| Dimensions        | 594 x 226 x 152cm                                                                                                   |
| Capacity          | 10350L                                                                                                              |
| Dry Weight        | 2100kg                                                                                                              |
| Power             | 45-60 Amps (Swim Zone) & 15 Amps (Spa Zone)                                                                         |

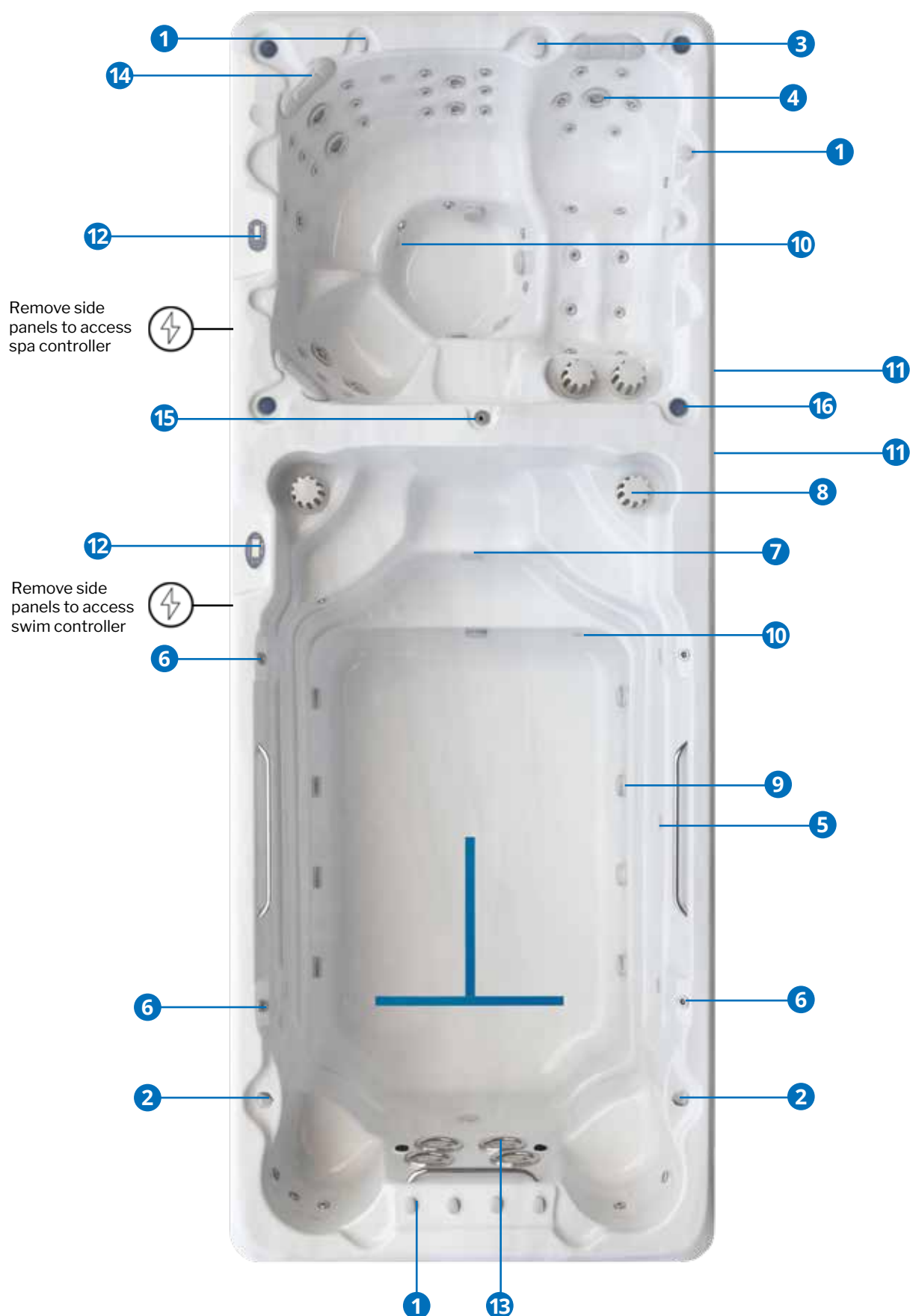
## Touch Pad Propulsion System Control (Swim Zone)



Jet buttons **A**, **B**, **C** and **D** turn on the swim jets to create the swim flow. Pumps powering the swim jets may also be shared with the massage jets. Turn the primary diverter (no.3) left or right to divert the pressure between the swim jets and the massage jets as required.



## Identify labeled parts on pages 56-58.





### SWIM SPA PARTS LABELED



#### 1 AIR VENTURI

Turning this dial injects air into the jet-stream, boosting the pressure of the jets in a particular set of seats (usually the ones closest to the dial). Turn dial off when finished with the jets to avoid a continuous flow of cold air entering the water when you are not soaking.



#### 2 WATER FOUNTAIN CONTROL DIAL

This smaller three pin valve is used to adjust the flow rate of the waterfall and fountains (if equipped). To turn off - simply twist clockwise until fully closed and reverse this process to turn on. Be careful not to overturn the dial and force it past its natural stopping point.



#### 3 PRIMARY DIVERTER

This dial gives you the ability to force maximum jet pressure into a certain group of seats. Turn it fully left or fully right to transfer water pressure between different seats in the swim spa. Position it halfway (50/50) to distribute an even pressure to all seats at once.



#### 4 MASSAGE JETS

Stainless Steel bearing-less jets come in a variety of sizes and configurations in your swim spa to deliver a range of different massage pressures to those persons soaking. Activate by turning on the jet pump via the topside control panel.



#### 5 LED PERIMETER LIGHTING

There is a perimeter of mini LED lights surrounding the mid inner edge of the acrylic. These can be switched between various colour options and modes by using the topside control panel. Select models only.



#### 6 WATER FOUNTAIN

Emits a steady stream from the borders of the swim spa. Fountains are controlled by the Water Fountain Control Dials usually located next to the fountain jet. Select models only.



## 7 LED FLOODLIGHT

A large LED submerged light sits below the waterline, tinting the water to the selected LED colour while syncing with the rest of the lighting package.



## 8 SKIMMER BOX

The skimmer box houses your filter(s) which water is drawn through when the circulation pump is engaged. (Floating weir skimmer and pictured, see pages 14-15 for model specific skimmer box examples).



## 9 PUMP INTAKES

Pump intakes sit in the foot-well of the swim spa. Water is sucked through these by the pumps and then expelled back out the jets.



## 10 INTERNAL DRAIN

The swim spa water drains out this port when the external drain valve is released. Small Ozone bubbles may emit from this piece from time to time - this is a normal function.



## 11 EXTERNAL DRAIN VALVE

The external drain valve sits on a cabinet panel on one side of the swim spa. Attach a hose and twist and turn to release the flow of water when draining. Using the drain valve is explained on page 63.



## 12 TOPSIDE CONTROL PANEL

This is the button pad and temperature display panel located on the top of the swim spa (and swim spa if attached separately) into which various commands, control sequences and options for operating the swim spa can be entered. (SV-SMART panel pictured)



### SWIM SPA PARTS LABELED - CONTINUED



#### 13 SWIM SPA JETS

Stainless Steel swim spa jets come in a variety of sizes and configurations between swim spa models. The power of these jets can be controlled by the swim spa's topside control panel.



#### 14 HEADREST

Select hydrotherapy seats have headrests as a comfort option to add to the relaxation experience. Some headrests have LED lights behind to illuminate the area (select models only).



#### 15 SWIM POLE HOLDER

The swim pole holder is installed on all Alpine swim spas and allows compatibility with the optional add-on Swim Pole Tether system.



#### 16 LED CUPHOLDER

Found on select models, these LED cupholders provide a stable platform to place a drink and enhance aesthetics by illuminating any glassware.



#### SYSTEM CONTROLLER

The heart of the swim spa. A computer system and heater makes up the controller as a whole and controls all components in the swim spa including the topside control panel. Dual models have two controllers to control their respective ends (swim and spa zones).





## PRESSURE DIVERTER & AIR VENTURI VALVES

### Pressure Diverter (Select Models)

Diverter within the Swim Zone:

Turning this dial left/right will switch the jet pressure between the propulsion swim jet and massage jets found within the swim zone.

Diverter within the Spa Zone:

Turning this dial left/right will transfer the jet pressure between the seats in the spa zone. For even jet pressure across all seats, leave the dial adjusted to the middle position (50/50).



### Air Venturi Valve

Turning these dials on will inject air flow into selected jets to increase their pressure. You will notice the water stream becomes aerated when functioning. The seat located closest to the dial is usually the one to receive the boost. We recommend to turn off these valves when you exit the pool.

The air venturies located above the swim jets will inject air into the swim flow jet.



## FOUNTAIN CONTROL (SELECT MODELS)

### Water Fountain Behaviour

As long as the dial is turned on, water will flow from the water fountain(s) when the swim spa is heating and/or filtering.



### Turning ON/OFF

Turn the fountain dial anti-clockwise to open the flow of water, clockwise to shut it off. Be EXTREMELY careful not to over-twist and push the dial past the point of natural resistance.





### LED LIGHTS

#### Activating the Lights - SV-SMART PANELS

Activate the LED lights by pressing the 'LIGHT' button found on the top-side control panel. Once pressed you can change the modes by using the 'UP', 'DOWN' and 'OK' buttons to select desired option.



LIGHT

UP

DOWN

OK

#### Activating the Lights - SV3 PANELS

Activate the LED lights by pressing the 'LIGHT' button found on the top-side control panel. Change the modes by pressing the 'MODE' button, and then using the 'UP', 'DOWN' and 'OK' buttons to select desired option.



LIGHT

MODE

SPD/CLR

UP

DOWN

OK

### MESSAGE JETS

#### Activating the Jets

To turn on a jet pump - press the jet button/s on the top-side control panel.



Jets

#### Adjusting Jet Water Flow

Each individual jet piece can have its water pressure adjusted by opening and closing the flow. For max pressure, simply turn the jet face gently in an anti-clockwise direction until you feel it stop. To reduce/stop the flow, turn in a clockwise direction. When closed, a small amount of water trickling through the jet piece is normal (this is protection for the pump in case all jets pieces are shut off).



Twist jet anti-clockwise to open flow.

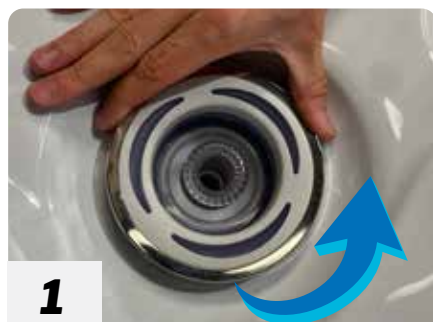


Twist jet clockwise to close flow.



## Removing the Jets

You will need to remove the jet pieces to clean behind them (It's easier to remove a jet piece when the swim spa is empty, however it is possible to do when filled). Ensure the jet pump is off before attempting to remove any jets.



**1** Grip the jet piece tight and turn in an anti-clockwise direction to the fully open position.



**2** When you feel the natural stopping point, apply slightly more turning pressure while gently pulling towards you.



**3** The jet piece should pop out and be able to be removed, exposing the jet body.

To replace the jet piece, reverse the steps above and turn in a clock-wise direction.

## Interchanging the Jets

Jets of the same size mold can be swapped around to build custom seats. Choose the desired jet pieces to interchange and follow the removal and replacement steps above.



*Jet pieces of the same size can be interchanged*

---

## SWIM JETS

---

The swim jets do not need to be removed or interchanged.

See your swim spa model (page 28-55) for information on how to power the swim flow.



### OPENING THE PANELS



**OPENING THE SWIM SPA PANELS IS A WARRANTY REQUIREMENT.**

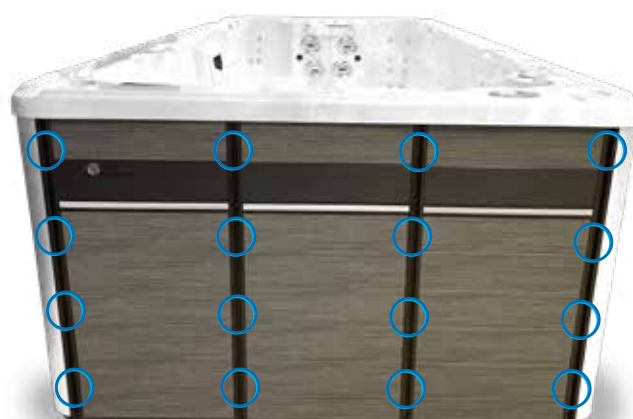
Your swim spa contains high performance parts that are regularly put under pressure and exposed to various water conditions controlled by the user. As part of your warranty requirements, your swim spa requires periodic checking of the components inside, just like how a car requires the bonnet opened to check oil.

The inspection is rather simple and should take no longer than 10 minutes.

**See pages 70-71 to understand what to check for.**



SPLASH



SWIM / SWIM PRO

Each short end of the swim spa consists of three cabinet panel pieces, left, centre and right. Holding these panels onto the frame of the swim spa are four vertical slats with 4 screws per piece. The long sides of the swim spa will have 5 or more panels, depending on the model of your swim spa.

To remove the panels:

1. Start by unscrewing the vertical slats from the left or right side.
2. Carefully remove one cabinet panel at a time, unscrewing the slats as you go until the desired panels are removed.
3. The panels should come away from the cabinet, if not, push down and/or pull towards you. Alumina cabinet (Swim Pro) will have LED strip lighting running between the cabinet panels, this needs to be disconnected via the black LED connector plug sitting between each panel.
4. Reverse the steps to replace the panels.



## DRAINING THE SWIM SPA

### Operating the Drain Valve

When it's time to drain the swim spa you can use the simple external drain valve mechanism located on the bottom edge of your swim spa. Water will not flow out of the drain as long as the cap is on tight and pressed in as per the 'flow locked position'. To use the drain valve, follow the steps below.

Note: Dual Zone models have individual drains for their zone.



*Flow locked*  
(Retracted Position with cap  
screwed on tight)

### Draining Water

Depending on usage, the swim zone should be drained every 6-12 months, while the spa zone (if a dual zone model) should be drained every 3-4 months. A dual zone spa will have two drain valves which allows you to drain each zone separately. More information can be found in the 'Spa Pool Water Care Handbook' found in your iPack, along with accessories to help drain the water.



**TURN OFF POWER TO THE SWIM SPA BEFORE DRAINING THE WATER!**



**1** Start with the drain in the 'Flow locked' position (retracted).



**2** Extend the inner drain valve by pulling on the drain cap all the way out as far as shown in next image.



**3** Unthread the drain cap and remove it.



**4** Screw on a male-end hose attachment.



**5** Attach your hose and run the end to a drain location.



**6** Push the drain valve slowly in towards the spa to the 'half way' point. Check that water flows from the hose and adjust (push in or pull out slightly) if necessary.





---

### CLEANING THE FILTERS

---

We recommend having a second set of filters on hand to rotate while cleaning.

#### **Quick Clean (once per week)**

Once a week, remove all filters from the swim spa and wash them down with a hose. Maximize the water pressure of your hose and spray the cartridge thoroughly (put your thumb over the tip of the hose). Your aim is to remove any build up of filtered material stuck between the folds of the filter paper. Do not leave filters out of swim spa for prolonged periods of time.

#### **Soak Filters (once per month)**

Once a month, remove your filters from the swim spa and place them in a bucket of warm water. Add filter cleaning solution to the bucket (available from Alpine Spas or Spa Supplies) and leave to soak overnight. Once soaked, remove from bucket and wash thoroughly with a hose to remove loosened debris.

#### **Replacing Filters (as required)**

A filter cartridge should last 6 months when cleaned as per this guide. Filters that are discoloured and become difficult to clean are signs that a new set may be due. Only Alpine Spas or approved cartridges are to be used in the swim spa.

---

### CLEANING THE ACRYLIC SHELL

---

#### **General Cleaning (as required)**

The acrylic surface is non-porous and most marks or dirt should come off quickly and easily. We recommend using a microfibre cloth to wipe the shell. For more resistant marks you can dissolve a small amount of baking soda into the cloth and apply it to the targeted area.

From time to time a ring (sometimes referred to as scum ring or tide line) may appear just above the waters edge. A wipe with a microfibre cloth will take care of this, but good water balance will generally prevent this from occurring in the first place. Check your water care handbook for advice.

#### **Cleaning When Draining (frequency as per page 63)**

When doing your drain and refill, it's a good chance to fully wipe down the acrylic shell. Use some baking soda or a low-strength all purpose cleaner and wipe everywhere with a microfibre cloth, including around the jets (you may want to pop them out to get in behind them).

Hose down the swim spa interior once finished and drain or bucket out the water at the bottom. You want to avoid refilling with the leftover remains of your cleaning solution as this may foam or cause trouble when trying to balance the water upon refilling.





---

## CLEANING & MAINTAINING THE CABINET

---

The synthetic cabinet (composite wood) is virtually maintenance free, however you should hose it down once a month or as required to remove any cobwebs or dirt accumulating. A mild soap and microfibre cloth could be used to assist if required for stubborn marks, as long as it is thoroughly washed off.

---

## CARING FOR THE SWIM SPA COVER

---

The cover is wrapped in marine-grade UV treated vinyl. Although it's tough and made to withstand the elements, the cover is continually exposed to harsh sunlight and weather conditions plus whatever else is thrown at it during day-to-day usage. To maximize its life-span, please follow these guidelines:

### **General Cleaning (as required)**

Keep your cover as clean as possible, and remove any debris that may build up on top of the vinyl. Wipe with a microfibre cloth or large towel and hose down if required. Wipe the underside of the cover regularly.

### **Dedicated Clean (once per month)**

Once a month, completely remove the swim spa cover from the swim spa (you may want to cover the swim spa with a tarp or similar protector during this process). Thoroughly clean both the top vinyl and underside of the cover using warm water and mild dish-washing detergent (do not use harsh chemicals). Hose off and dry the cover with a towel. Ensure you clean the locks and straps so they are free of any mold or cobwebs.

For traditional hardtop covers, unzip a portion of the zip and in a safe place, stand your cover up to form an 'A-frame' and leave to dry like this for 1-2 hours before placing back on top of your swim spa.

### **Protecting the Vinyl (every 6-12 months)**

Every 6-12 months or each time you go to drain your swim spa, it's a good chance to apply a vinyl protector to the topside of the cover. A spray on solution such as '303 Aerospace Protectant' with U.V protecting properties or similar would be sufficient. Dry cover and remove any dirt before applying. A light coat will bring the colour back to life and help your cover stand the test of time.



---

### CLEANING THE MASSAGE JETS

---

Turn the swim spa off. Remove the massage jet pieces (can be done while filled) from the body (see page 61) and clean in a bucket of water. Use a brush if required to remove any build up of calcium or grime. Clean inside the jet body if required. Inspect the plastic backing - any sign of corrosion (flaking or peeling) please contact Alpine Spas as this is an indication of poor water quality and low/high levels of pH or alkalinity. Rinse jets thoroughly in fresh water before reinstalling.

---

### PERFORMING A PIPE CLEAN

---

Consistent water balancing and general filter cleaning will keep your water clean and clear and protect your swim spa components. But unfortunately it's almost impossible to avoid bacteria and organic material making a home inside the swim spa plumbing/pipes.

Bacteria has a way of protecting itself by forming as 'bio-film' which sticks to the inside of the pipes. Although this rarely causes issues, excessive build up can make water balancing more difficult and you may find bits of bio-film floating in the swim spa if some of it manages to detach from the interior pipe wall.

To destroy bio-film or any other nasties hidden in the pipes, a 'Pipe Clean' should be performed every 6 months. Keep in mind that the swim spa's water is to be drained after this process, so you may just want to incorporate it into your 6 or 12 monthly draining schedule. 'Pipe Cleaner' can be purchased from Alpine Spas.

Steps to perform a 'Pipe Clean'.

#### **1. Clean Filters**

This process will rely heavily on the filters to collect the grime ejected from within the pipes. A freshly cleaned set of filters should be installed before performing a 'Pipe Clean'.

#### **2. Open All Jets**

Ensure all jets and valves around the swim spa are open (turn anti-clockwise).

#### **3. Add 'Pipe Cleaner' & Run Jets**

Follow directions on the label and add the solution to the water with all pumps turned on. Be prepared for foam to build up. You may notice the foam becomes brown, green or yellow, this is a good sign of bio-film removal. Bucket out the foam where possible to relieve stress on the filters. Engage pumps again when they time-out until the foam stops accumulating in excessive amounts or is at least mostly non-coloured, while cleaning out filters in-between.



#### **4. Circulate Water**

Place the cover back on the swim spa and leave it to circulate for a few hours, then remove the filters and wash thoroughly. Wipe the acrylic edge if required and drain the swim spa as per the drain and refill process.

#### **5. Refill and Shock**

After refilling the swim spa, remove the cover and shock dose the water with Spa Chlor or O2 Shock to kill any existing bacteria present in the water. Aerate the spa using the jets.

---

### **LEAVING THE SWIM SPA SHORT TERM**

---

If you are heading away for a holiday or just know you won't be using your swim spa for a short period of time (less than a month), it's a good idea to take some steps to protect your swim spa and save you the heating costs!

#### **1. Clean Filters**

Your swim spa operates best with a clean set of filters. Remove and wash thoroughly as per filter cleaning instructions on page 64.

#### **2. Remove Headrests**

Unclip the headrests and dry off before putting them in a safe place. When the cover stays on the swim spa for an extended period of time, ozone gas can build up on top of the water and eat away at the headrest material.

#### **3. Shock Dose**

Shock dose the water using a capful of 'Spa Chlor' and ensure the cover is left off for 1 hour while running the pumps before replacing it.

#### **4. Turn Down Temperature**

Turn the temperature down to the low 20's, or place in away mode and make sure the swim spa is set to operate its filter cycles automatically (this is the default).

#### **5. Secure Cover**

Place the swim spa cover on securely and lock with the clips.

By following those steps your swim spa will keep filtering and will not heat excessively while you are away. You will return to a healthy, clean swim spa. If possible, while you are away, have a neighbour or friend open the swim spa cover once a week for a few minutes to air it out and shock dose the water if required.



### TURNING OFF LONG TERM

There may come a time when you need to leave the swim spa for a period longer than a month and want to shut the swim spa off. Follow these steps to safely prepare the swim spa for hibernation:

#### **1. See Previous Steps**

Perform steps 1 and 2 from 'Leaving the Swim spa Short Term' before moving on.

#### **2. Turn OFF The Swim Spa**

Completely turn off the swim spa at your isolation switch or mains board.

#### **3. Drain the Water**

Drain the water out of the swim spa via the external drain valve.

#### **4. Drain pipes via Barrel Unions**

Open up the cabinets surrounding the swim spa and locate the barrel unions at the controller unit / heater and the pumps. Loosen (strap wrench may be required) the barrel unions either side of the component to drain excess water from the surrounding pipes. Put down a towel if required, to soak up water. Tighten the unions back up once finished.

#### **5. Blowout Pipes (recommended if switching off for 6+ months)**

Climb inside the swim spa with a 'Wet-Vac'. Remove the massage jet pieces and place the vacuum nozzle into the jet body to suck water directly out of the pipes. Attend to as many jets as possible and also the internal drain valve located at the bottom of the swim spa.

#### **6. Wipe Down Swim Spa**

Remove any excess build up of water from inside the swim spa and wipe the acrylic shell down completely with a microfibre cloth and mild all-purpose anti-bacterial spray.

#### **7. Secure Cover**

Place the swim spa cover on securely and lock with clips. Cover entire swim spa with a tarp or 'swim spa winter cover' for the best long-term protection.



---

## CLEANING & MAINTENANCE SCHEDULE

---

Follow this easy cleaning & maintenance schedule to care for your Swim Spa and help protect your warranty.

### WEEKLY

- ☐ Test and balance the water
- ☐ Clean filters (quick clean process)
- ☐ Shock dose (if required e.g. water is not clear)
- ☐ Wipe down cover, cabinet and acrylic as required.

### MONTHLY

- ☐ Clean filters (soak process)
- ☐ Clean cover (dedicated clean process)
- ☐ Rinse headrests in fresh water

### EVERY 6 MONTHS

- ☐ Remove, inspect and clean jet pieces
- ☐ Wipe down acrylic shell while water is drained
- ☐ Protect cover (apply vinyl protectant)
- ☐ Open panels and inspect components
- ☐ Inspect pumps, check barrel unions and U.V Bulb



### PUMP MAINTENANCE

You must check the pumps inside your swim spa on a regular basis to ensure they are operating as efficiently as possible and there is no leaking or corrosion occurring. Issues with pumps, particularly seal corrosion, is generally caused by incorrect pH and alkalinity levels or excessive dosage of sanitisers such as chlorine or bromine.

Maintaining/balancing the swim spa water according to well established methods and following the guide provided will help to avoid such issues.



**ISSUES OUTLINED ABOVE ARE NOT COVERED BY WARRANTY.**

#### How to check your pump(s)

We recommend checking the pump(s) every 6 months which should become part of your drain and refill process. The number of pumps will vary per swim spa, so check your swim spa overview page.

Open up the cabinets around the swim spa to find the pump(s). Any signs of leaking, rust, calcium build-up or yellow/white powder type substance usually between the plastic wet end and metal parts of the pump may indicate an issue and service may be required. Please photograph and contact Alpine Spas.

### BARREL UNION MAINTENANCE

Barrel unions are the connection piece used to join the plumbing to the pumps and the heater. Being able to easily remove the pumps or heater is important for servicing.

Because barrel unions are a thread fitting, they may loosen slowly over time due to factors such as vibration (from the pump) and need to be checked periodically. Loose barrel unions will promote leaks.

#### How to check your barrel unions.

Open up the cabinets around the swim spa. Find the pump(s) and the system controller (this unit houses the heater) and you will see the white barrel unions which sit at either end of the component (pump, heater etc). Check to see if they need to be tightened and if so, grip and turn clock-wise to tighten.







---

## UV SYSTEM BULB REPLACEMENT

---

It is a requirement of the owner to change the Ultra-Violet light bulb (if equipped) every 18 months, however like any light-bulb, there is a chance the bulb could fail before its expected lifetime is up. If this is the case, the light inside the U.V control (inside swim spa cabinet) will turn from green to red. Check for this light when performing your 6 monthly component inspection as per page 69.

Contact Alpine Spas to purchase a new U.V bulb - the bulb carries a 12 month parts warranty.

A replacement can be installed in a number of minutes without needing to drain the swim spa. Please follow our video or photo guide found on our support page (see link below).

---

## TECHNICAL SUPPORT CONTACT

---

If reading through this manual and following the solutions from the troubleshooting guide has not resolved your issue, please contact Alpine Spas:

**EMAIL**  
**service@alpinespas.co.nz**

**OR PHONE: 0800 99 33 88**

SELECT TECHNICAL SUPPORT FROM THE OPTIONS



Download the latest copy of this manual and other helpful documentation from our support page:  
<http://alpinespas.co.nz/support/>  
Scan QR code for direct link.





## TROUBLESHOOTING

### Water Troubleshooting

Please see our 'Spa Pool Water Care Handbook' for a complete guide of troubleshooting water issues. See page 17 for more information.



Download our 'Swim Spa Water Care Handbook' from our support page: <http://alpinespas.co.nz/support/>  
Scan QR code for direct link.



### General Troubleshooting

| ISSUE                                                         | POSSIBLE CAUSE                                                 | SOLUTION                                                                                                  |
|---------------------------------------------------------------|----------------------------------------------------------------|-----------------------------------------------------------------------------------------------------------|
| Display is blank                                              | Data connection failed                                         | Switch Swim spa OFF and ON again                                                                          |
| No power                                                      | Breaker or RCD OFF<br>Loose plug or wires                      | Check RCD is turned on<br>Check plug & wire connections (electrician)                                     |
| RCD trips                                                     | Mis-wired connections<br>Component failure                     | Check wiring is correct & matches diagram (electrician)<br>Call for service                               |
| Swim spa NOT heating                                          | Swim spa in rest/away/sleep mode<br>Temp set low               | Change mode to ready/normal mode<br>Increase set temperature                                              |
| Swim spa doesn't reach set temperature                        | Swim spa in rest/away/sleep mode                               | Change mode to ready/normal mode                                                                          |
| Low jet pressure                                              | Jets closed<br>2-Speed Pump in low speed                       | Turn jet face anti-clockwise to open.<br>Press jet button again to enter high speed (if equipped)         |
| No jet pressure / pump not working                            | Air-lock in plumbing                                           | Prime pump by pressing jets button on/off 2-3 times in sequence. Bleed pump by loosening the barrel union |
| Noisy pump                                                    | Seal corrosion                                                 | Open panel near pump and inspect for leaking or evidence of chemical corrosion or buildup.                |
| Swim spa is leaking / water appears on ground around cabinets | Leaking from barrel union or fitting<br>Leaking from corrosion | Check & tighten barrel unions on pumps & controller<br>Contact Technical Support                          |



## Diagnostic Messages - Topside Control Panel

| MESSAGE                                                                                                                                                                                                                                                                                                      | CAUSE                                                                                                                              | ACTION REQUIRED                                                                                                                                                                                                                                                            |
|--------------------------------------------------------------------------------------------------------------------------------------------------------------------------------------------------------------------------------------------------------------------------------------------------------------|------------------------------------------------------------------------------------------------------------------------------------|----------------------------------------------------------------------------------------------------------------------------------------------------------------------------------------------------------------------------------------------------------------------------|
| ER-2 HEATER PLUG<br>(No heat sensor communication)                                                                                                                                                                                                                                                           | Internal heater sensor communication error                                                                                         | Turn mains power OFF, wait 5 minutes then restart swim spa. Contact tech if problem not resolved                                                                                                                                                                           |
| ER-3 WATER PRIME<br>(prime has failed)                                                                                                                                                                                                                                                                       | Air detected in heater tube<br>Low water level<br><br>Dirty filter cartridges<br><br>Airlock in pipe work<br><br>Slice-valves shut | Press Pump A button to retry water prime.<br>Check swim spa water level (refill if necessary)<br>Remove and clean filter cartridges then press Pump A button to retry prime<br>Bleed air from pipes by loosening barrel unions on pumps<br>Check all slice valves are open |
| ER-4 THERMAL TRIP<br>(Heater thermal trip activated. Heater has been active & has had insufficient water flow over the element. Low or no water flow has caused the heater temperature to exceed its maximum limits & the swim spa control has shut down operation to prevent any damage to the heater unit) | Low water level<br><br>Airlock in pipe work<br><br>Dirty filter cartridges<br><br>Slice-valves shut                                | Check swim spa water level (refill if necessary)<br>Bleed air from pipes by loosening barrel unions on pumps<br>Remove and clean filter cartridges then press Pump A button to retry prime<br>Check all slice valves are open                                              |
| ER-5 POOL TOO HOT<br>(Water temperature too high, sensor reading +45 degrees)                                                                                                                                                                                                                                | High ambient temp (summer)<br><br>Excessive filtration time                                                                        | Turn off swim spa, remove cover and allow water to cool before switching back on.<br>Reduce filtration time                                                                                                                                                                |
| ER-6 12V OVERLOAD                                                                                                                                                                                                                                                                                            | 12V port current draw exceeding 1A limit                                                                                           | Call for service                                                                                                                                                                                                                                                           |
| ER-8 CTRL FAULT HVS<br>(heater relay on when it should be off)                                                                                                                                                                                                                                               | Power Surge<br><br>Periods of low/high voltage<br><br>Water on controller terminal                                                 | Turn mains power OFF & back ON again<br><br>Inspect inside swim spa cabinet for leaks or evidence of water exposure to controller. Turn off swim spa, dry water/fix leak and let controller dry out                                                                        |
| ER-10 OVER CURRENT<br>(Mains 230v current draw above current limited C.LMT detected)                                                                                                                                                                                                                         | Components current draw too large for C.LMT setting                                                                                | Power OFF/ON. Check C.LMT / L.SHD / L.LMT settings are correct. Do elimination test on components using the control panel to identify which connection is causing the fault                                                                                                |



alpine**spas**™

0800 99 33 88 | [service@alpinespas.co.nz](mailto:service@alpinespas.co.nz) | [www.alpinespas.co.nz](http://www.alpinespas.co.nz)

ver 2020.01